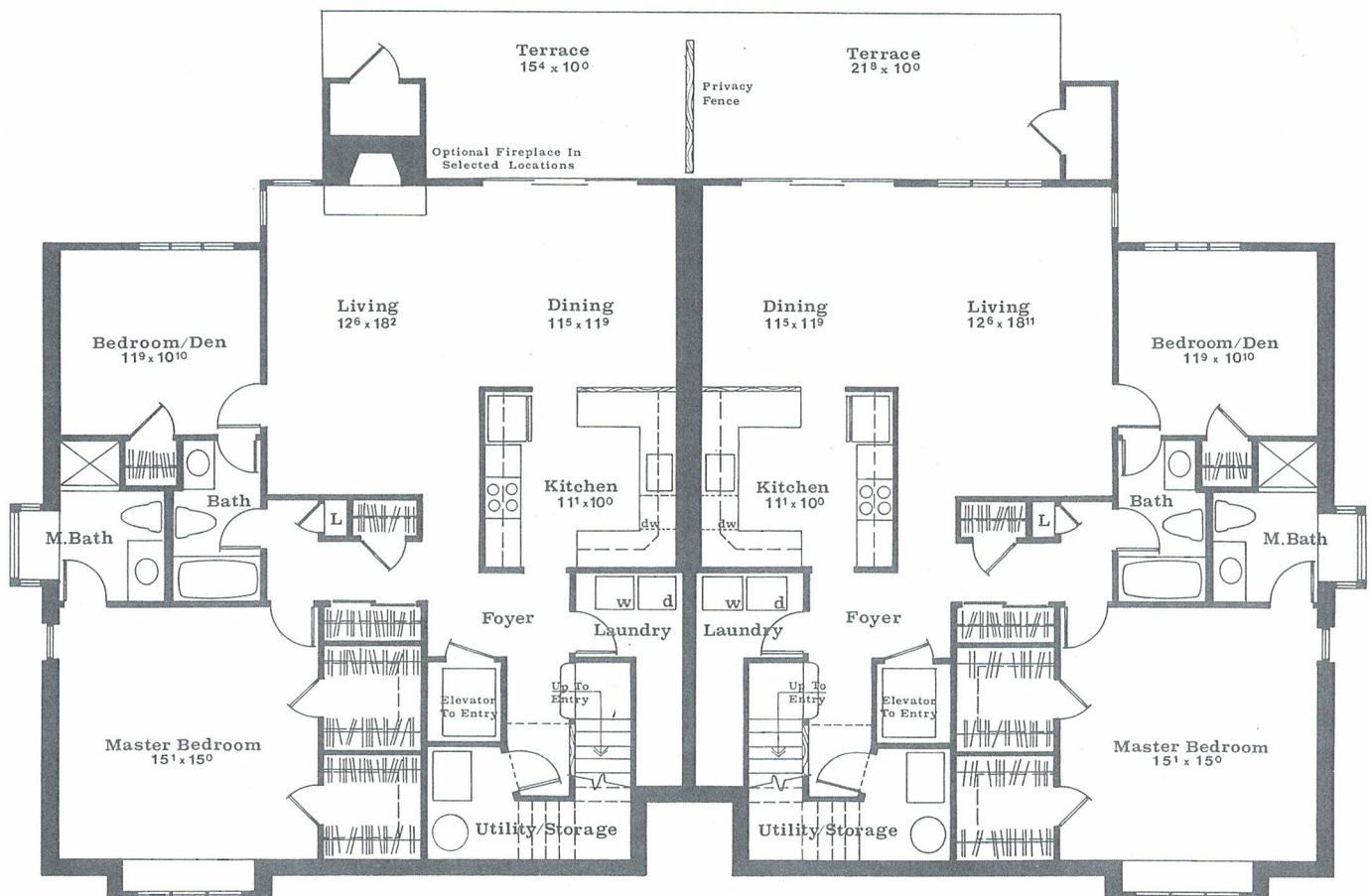


The Country Commons at Jefferson Village

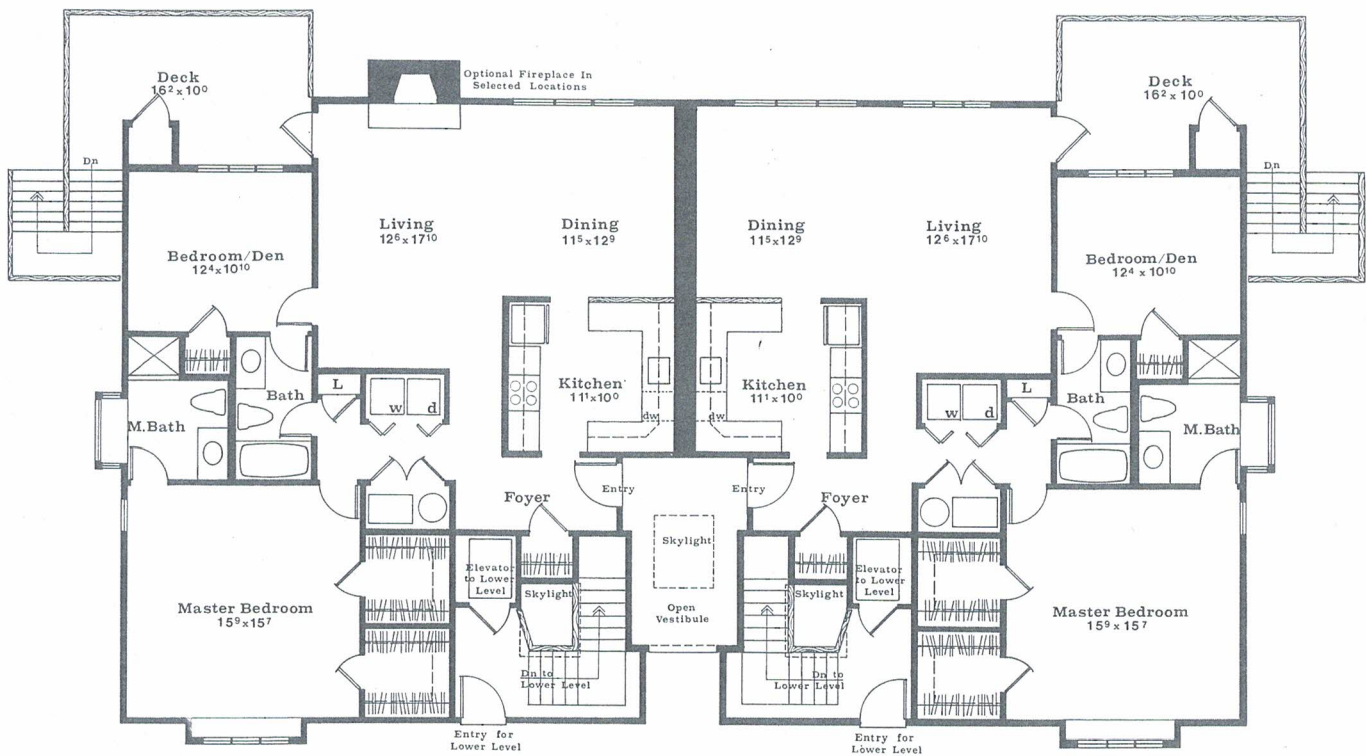
The Country Commons at Jefferson Village reflects a careful balance between the contemporary and the traditional. Each Country Commons consists of four complete, full-sized homes attached to one another for easy access and efficiency. Buyers may choose from one of two entry-level homes, or one of two homes accessed on the upper level by private elevator. Shared landscaping, walkways, entries and foyers make these homes both attractive and affordable.

The Country Commons home is available in two floorplans—the Chalfont and the Kimberton. Each features one full-sized bedroom, plus a second room that may be used as an additional bedroom, library or den. The Country Commons at Jefferson Village are designed especially for individuals who prefer a carefree, easy lifestyle, and for couples who want to simplify their lives.



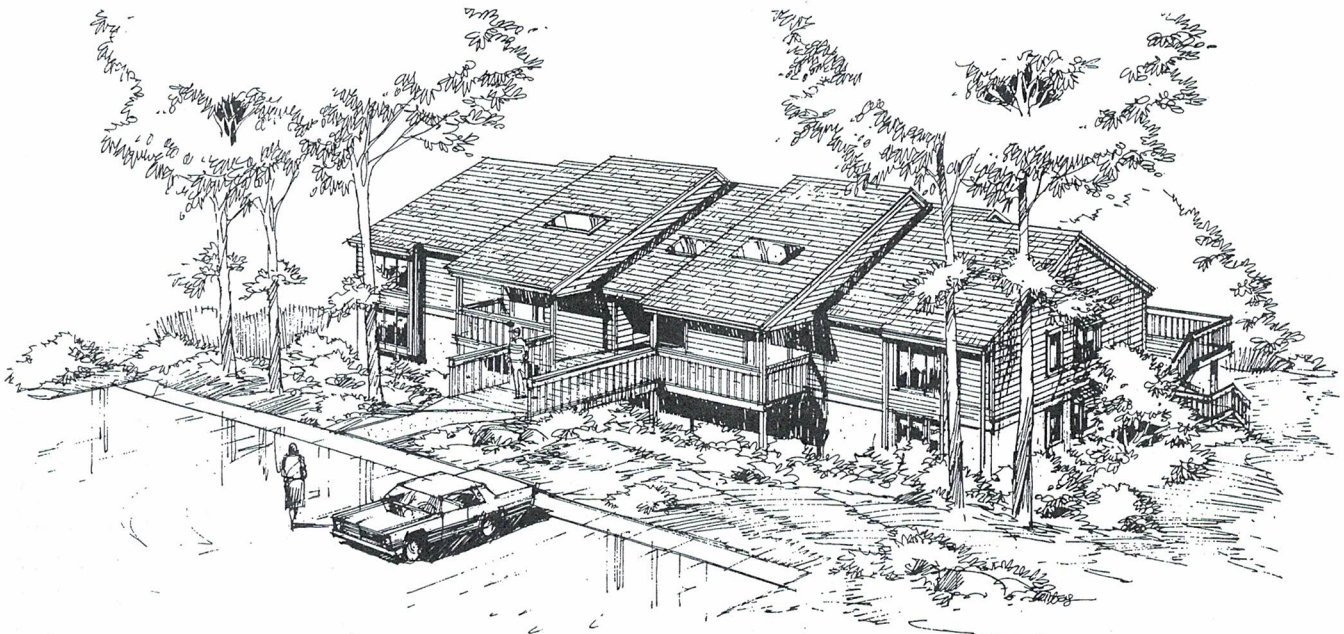
Chalfont

Upper Units • 1340 Sq. Ft. • 2 Bedrooms • 2 Baths

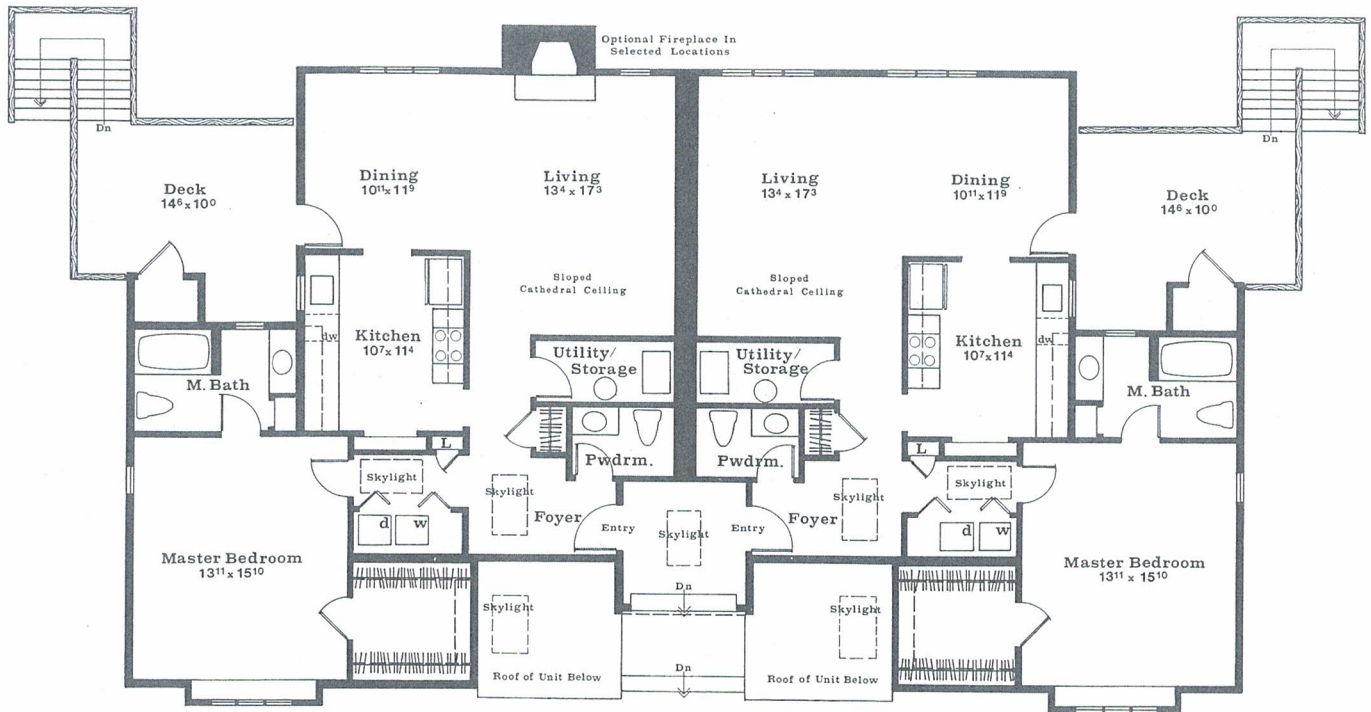


Chalfont

Lower Units • 1550 Sq. Ft. • 2 Bedrooms • 2 Baths



Chalfont Front View

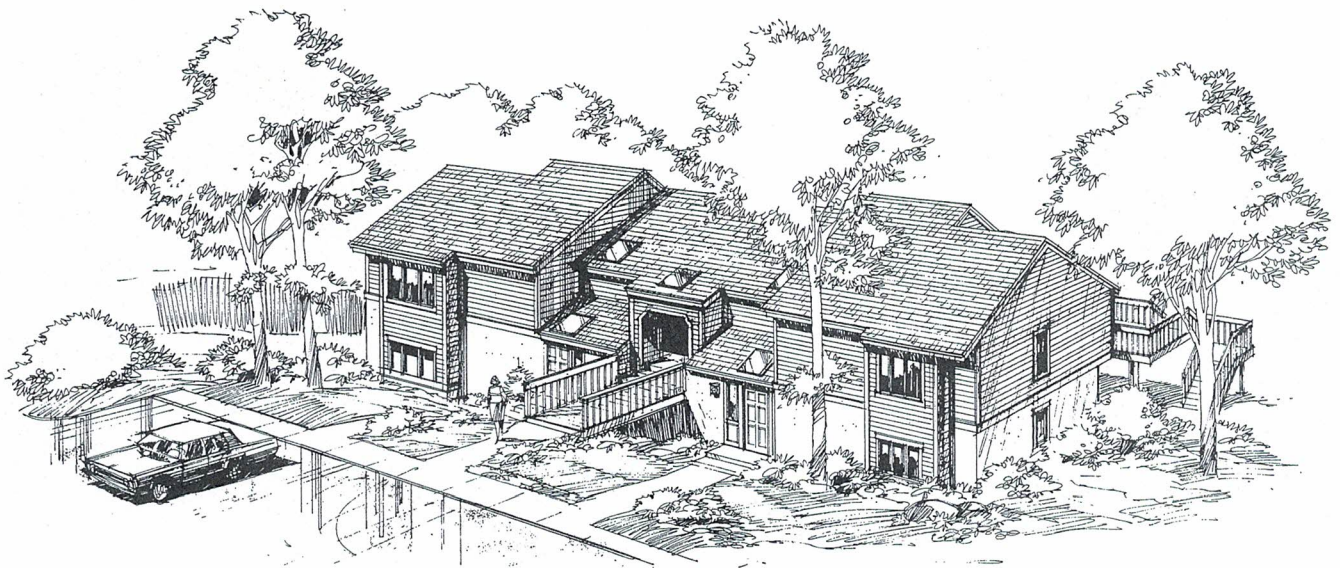


Kimberton

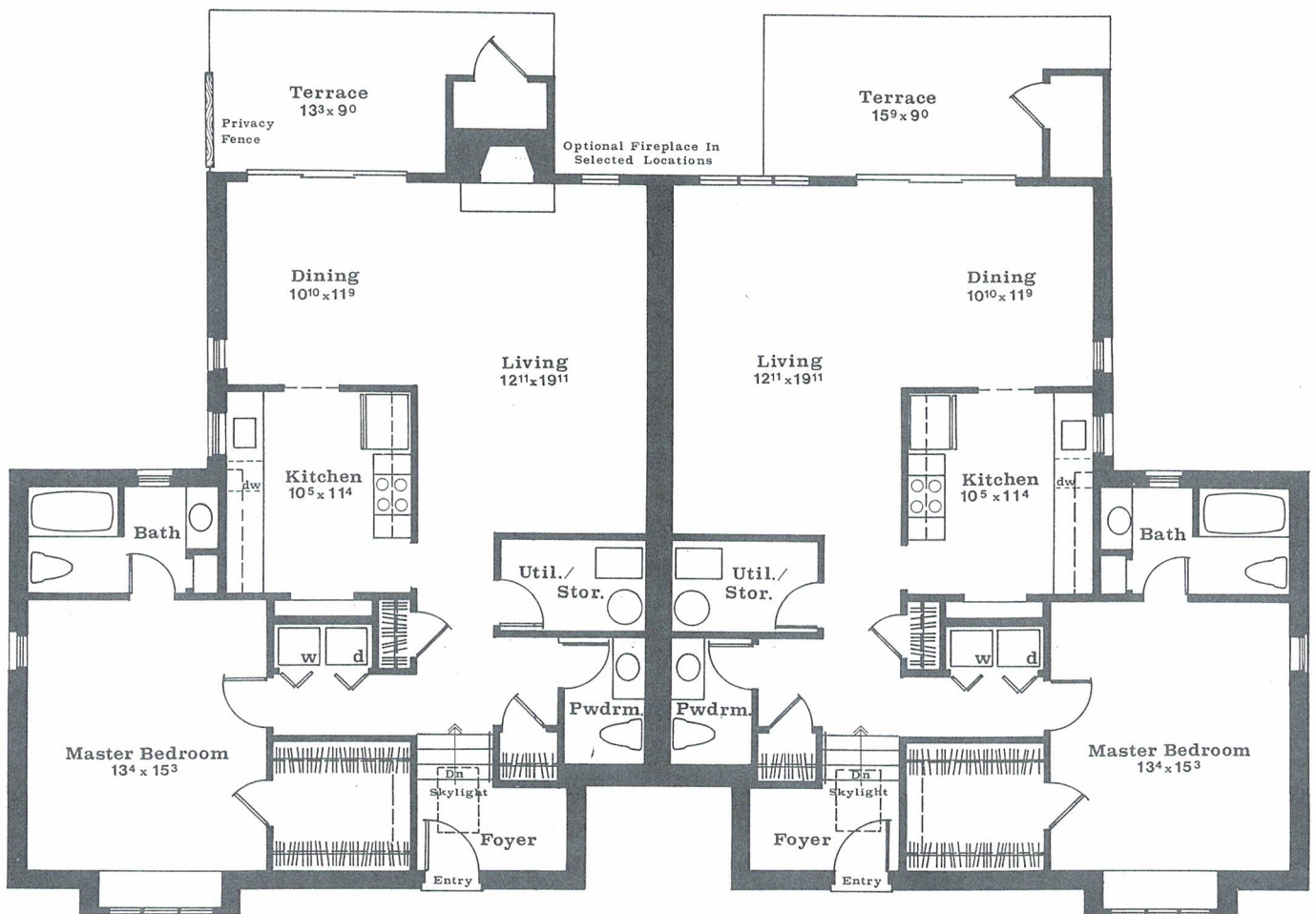
Upper Units • 1165 Sq. Ft. • 1 Bedroom • 1½ Baths



Kimberton Rear View



Kimberton Front View



Kimberton

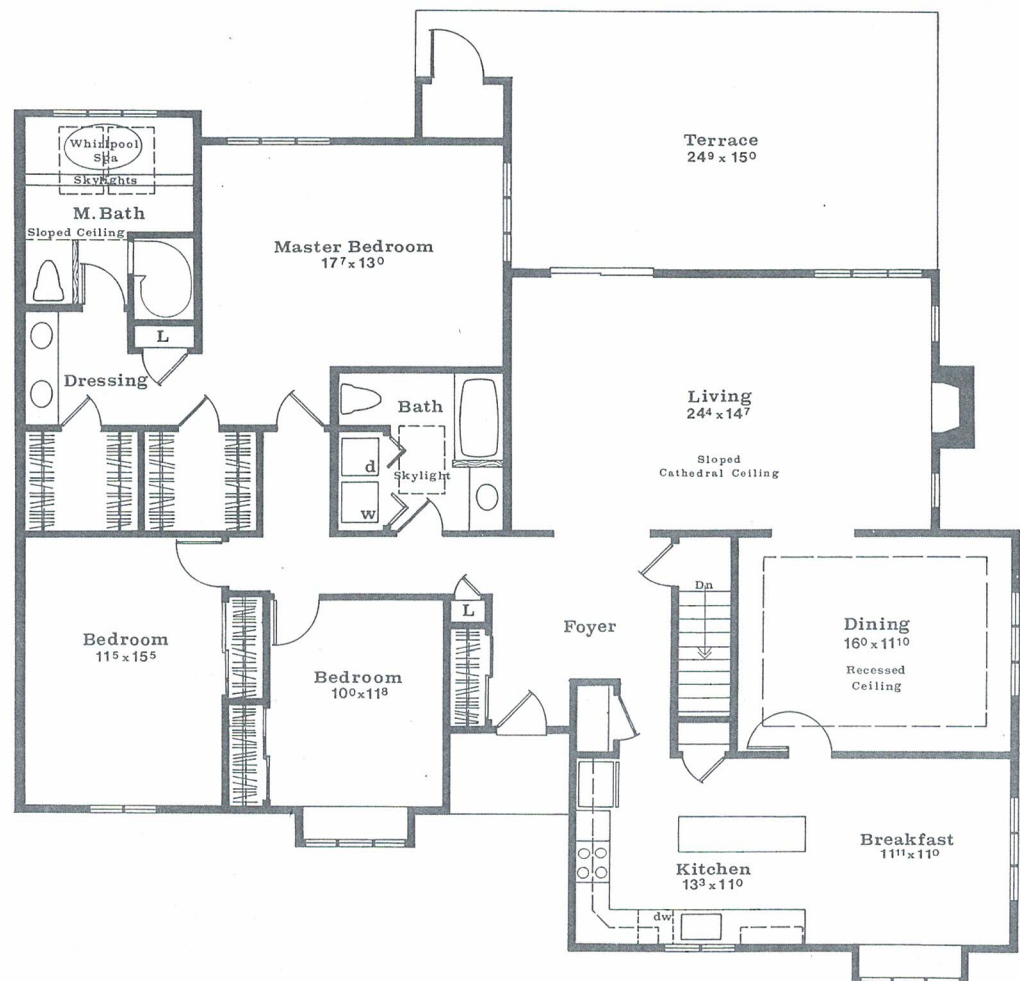
Lower Units • 1245 Sq. Ft. • 1 Bedroom • 1½ Baths

Four Attached Homes From Which to Choose

For those who desire a little more living space, we offer a series of four beautifully appointed attached homes from which to choose—the Marlborough, the Thornbury, the Donegal and the Bradford. Each has its own character, its own charm, and its own appealing qualities.

Every home in Jefferson Village is built with an eye for style, for comfort, for pleasure and relaxation.

Whether you select an attached home or choose the Country Commons, you'll enjoy superior craftsmanship, energy efficiency and a number of security and safety features designed to fit your specific needs. And, perhaps best of all, every home at Jefferson Village comes with a prestigious Hershey's Mill address that lets you live an enviable country club lifestyle every day of the year.

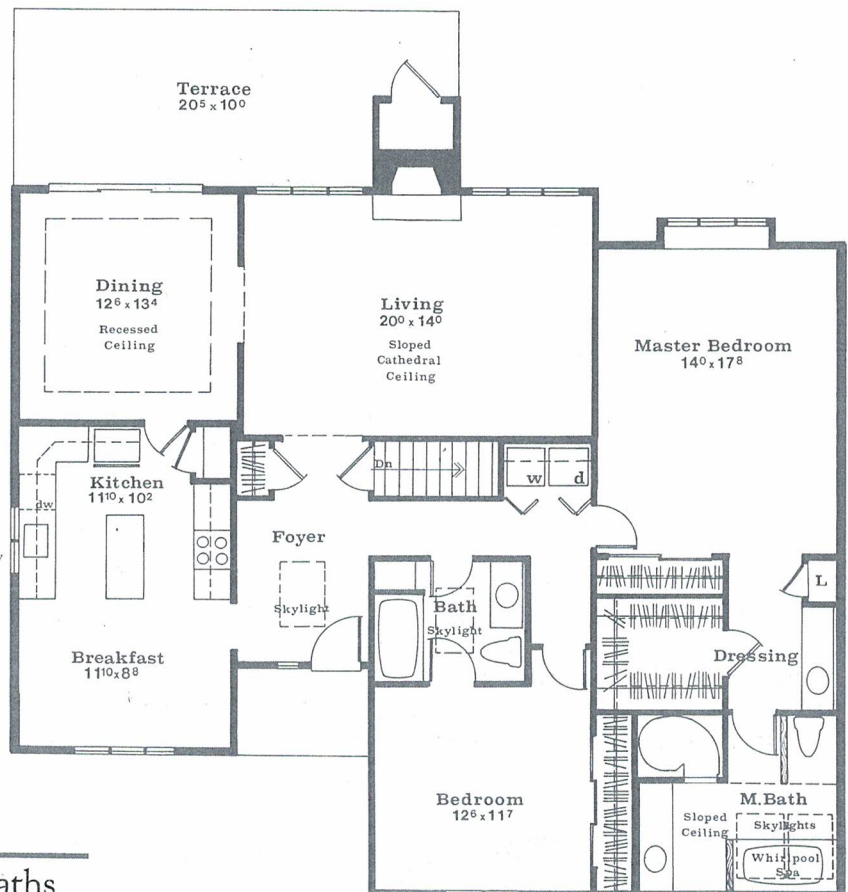
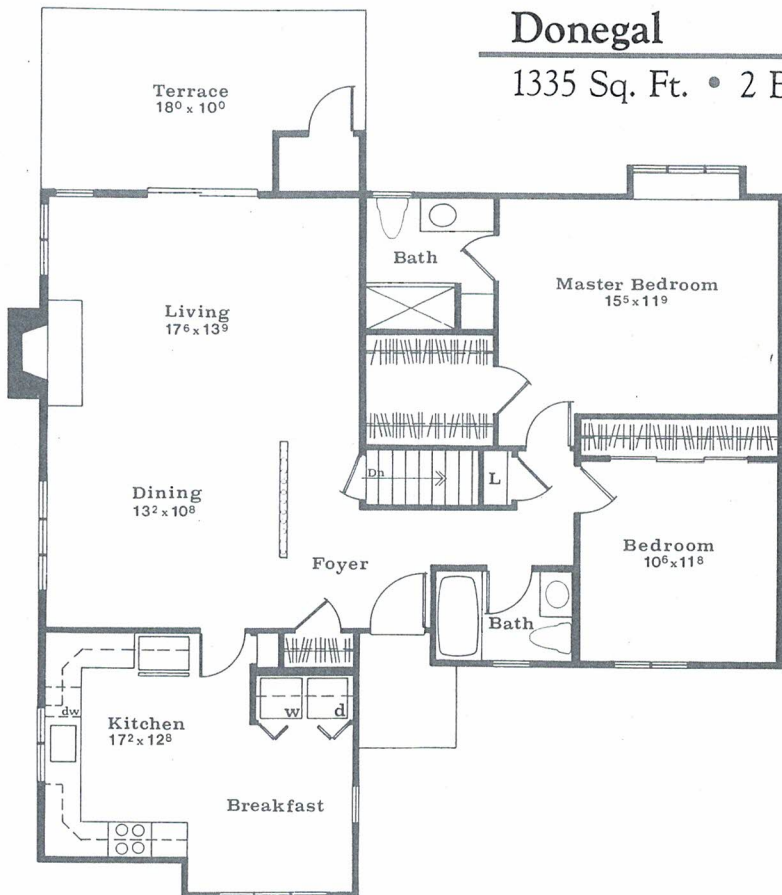


Marlborough

2170 Sq. Ft. • 3 Bedrooms • 2 Baths

Donegal

1335 Sq. Ft. • 2 Bedrooms • 2 Baths

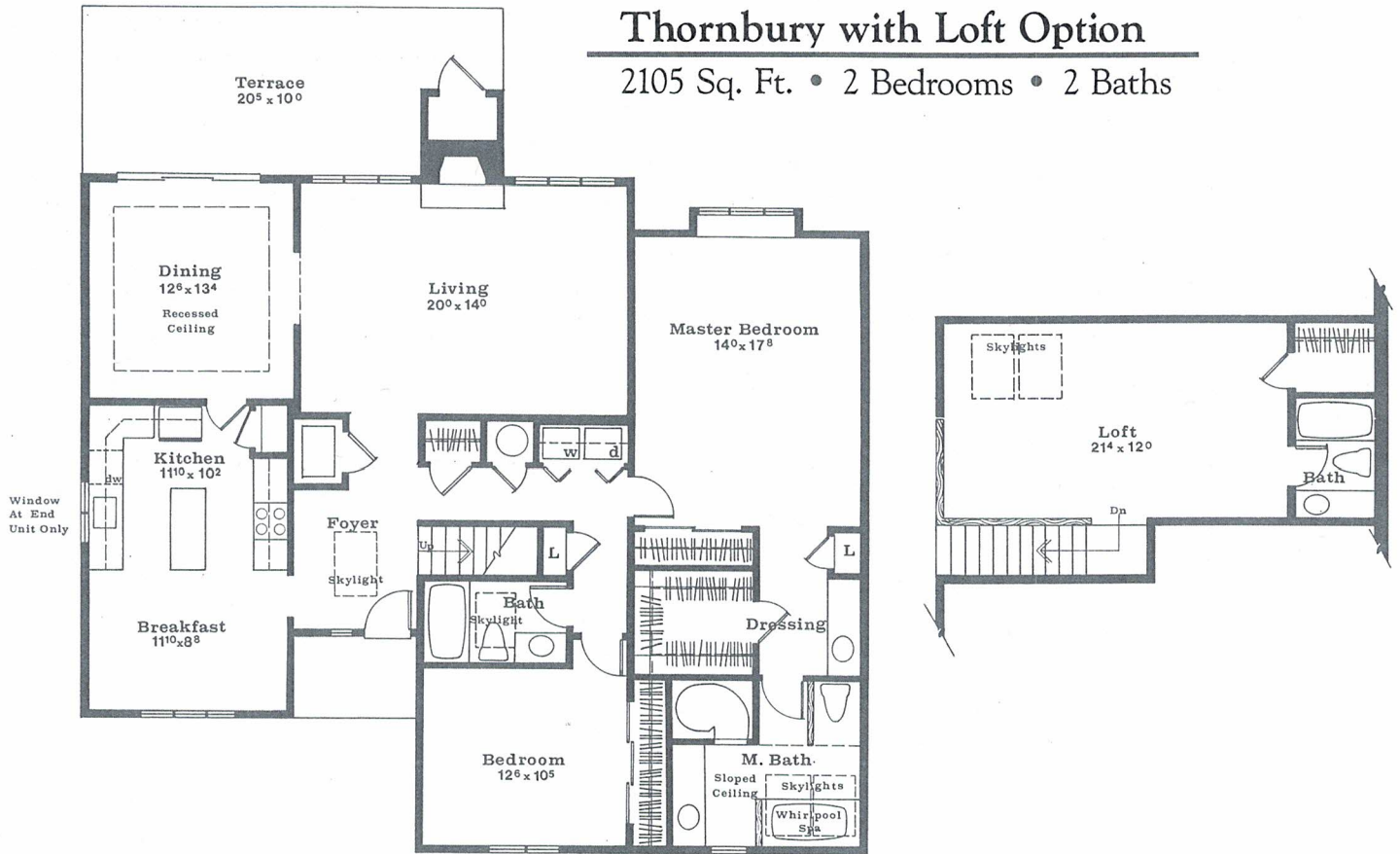


Thornbury

1765 Sq. Ft. • 2 Bedrooms • 2 Baths

Thornbury with Loft Option

2105 Sq. Ft. • 2 Bedrooms • 2 Baths



Bradford

1750 Sq. Ft. • 3 Bedrooms • 2 Baths

