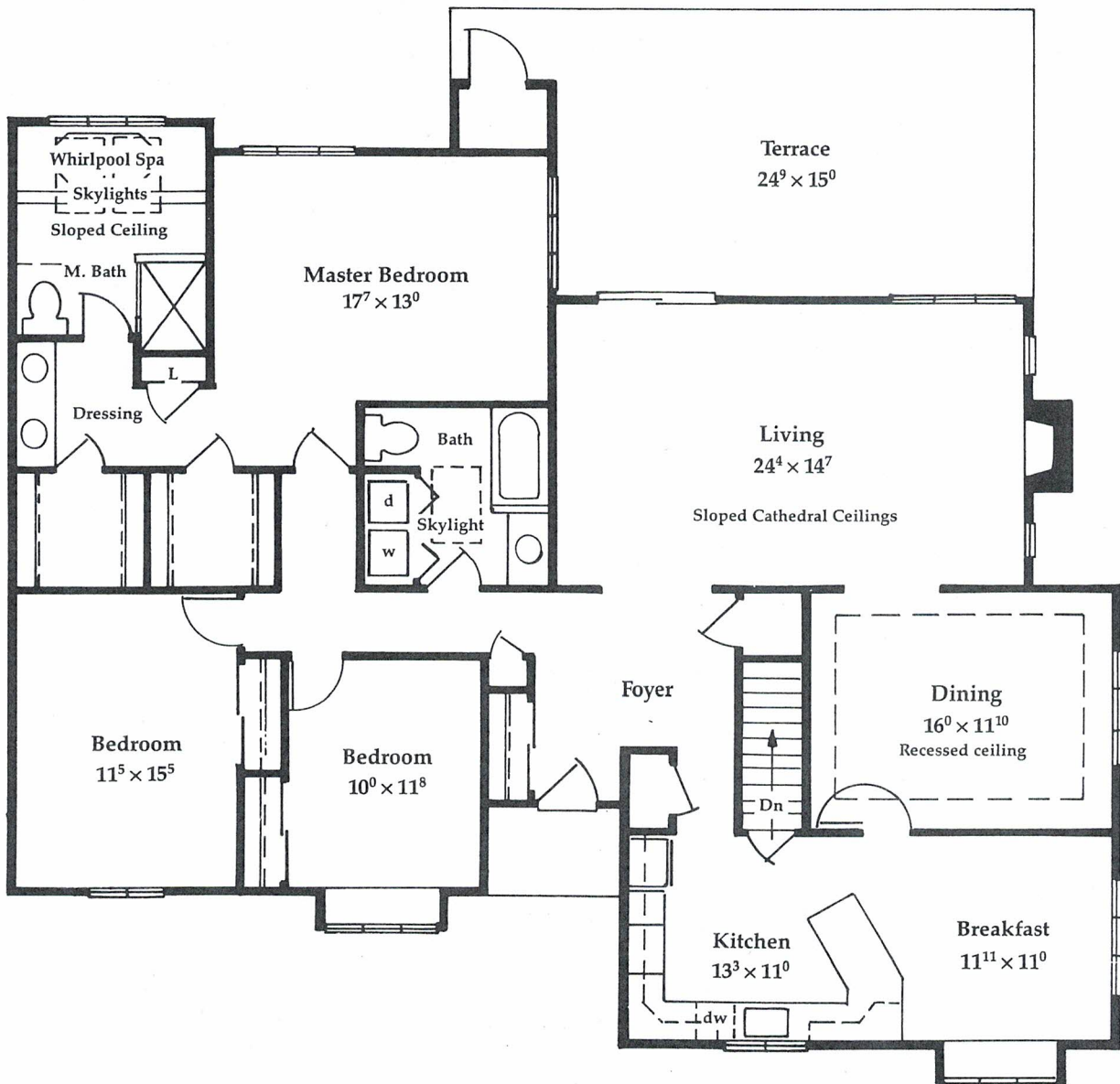


# Six Attached Floorplans From Which to Choose

Princeton Village offers a series of six beautifully appointed attached floorplans from which to choose—the Marlborough, the Bradford, the Newtown, the Thornbury, the Springton and the Donegal. Each has its own character, its own charm, and its own appealing qualities.

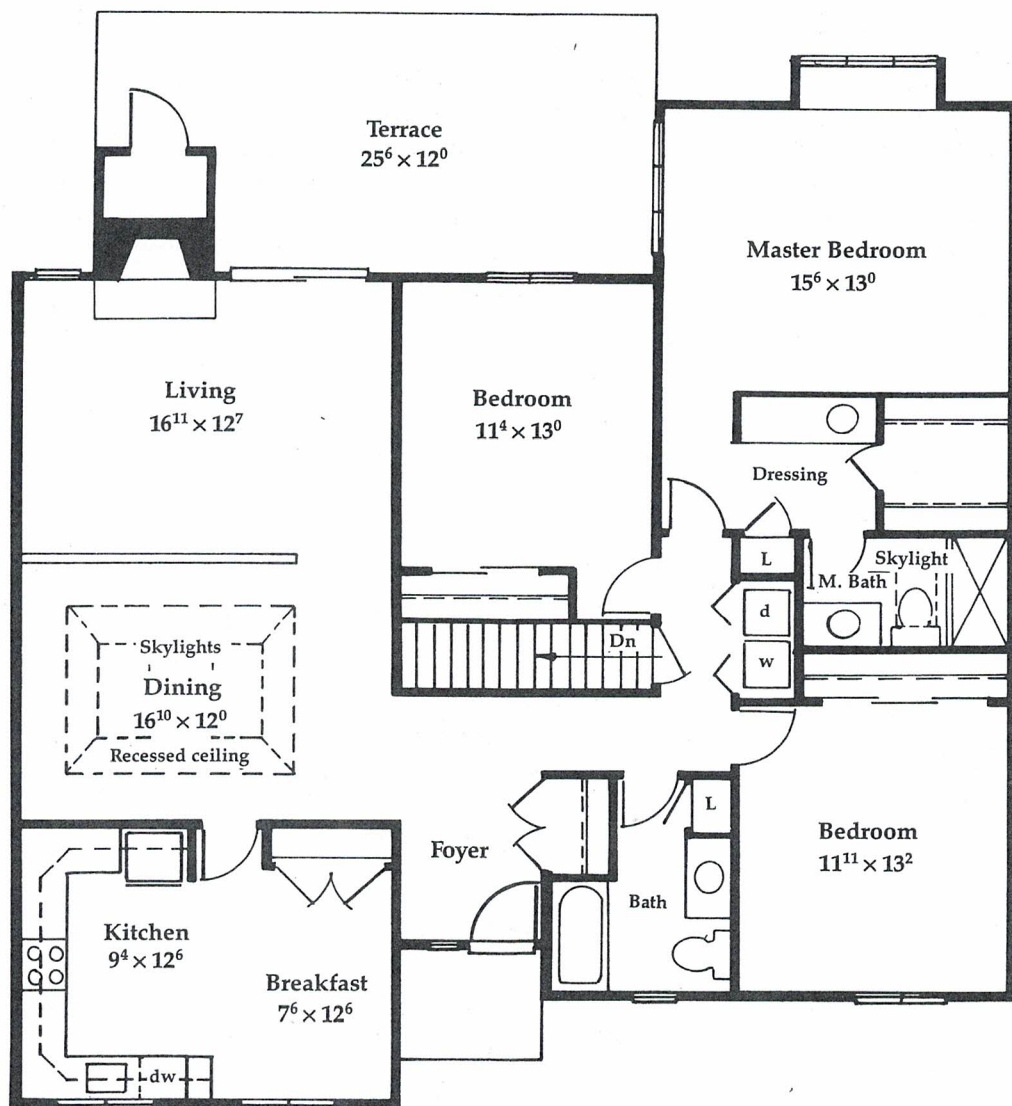
Every home in Princeton Village is built with an eye for style, for comfort, for pleasure and relaxation.

You'll enjoy superior craftsmanship, energy efficiency and a number of security and safety features designed to fit your specific needs. And, perhaps best of all, every home comes with a prestigious Hershey's Mill address that lets you live an enviable country club lifestyle every day of the year.



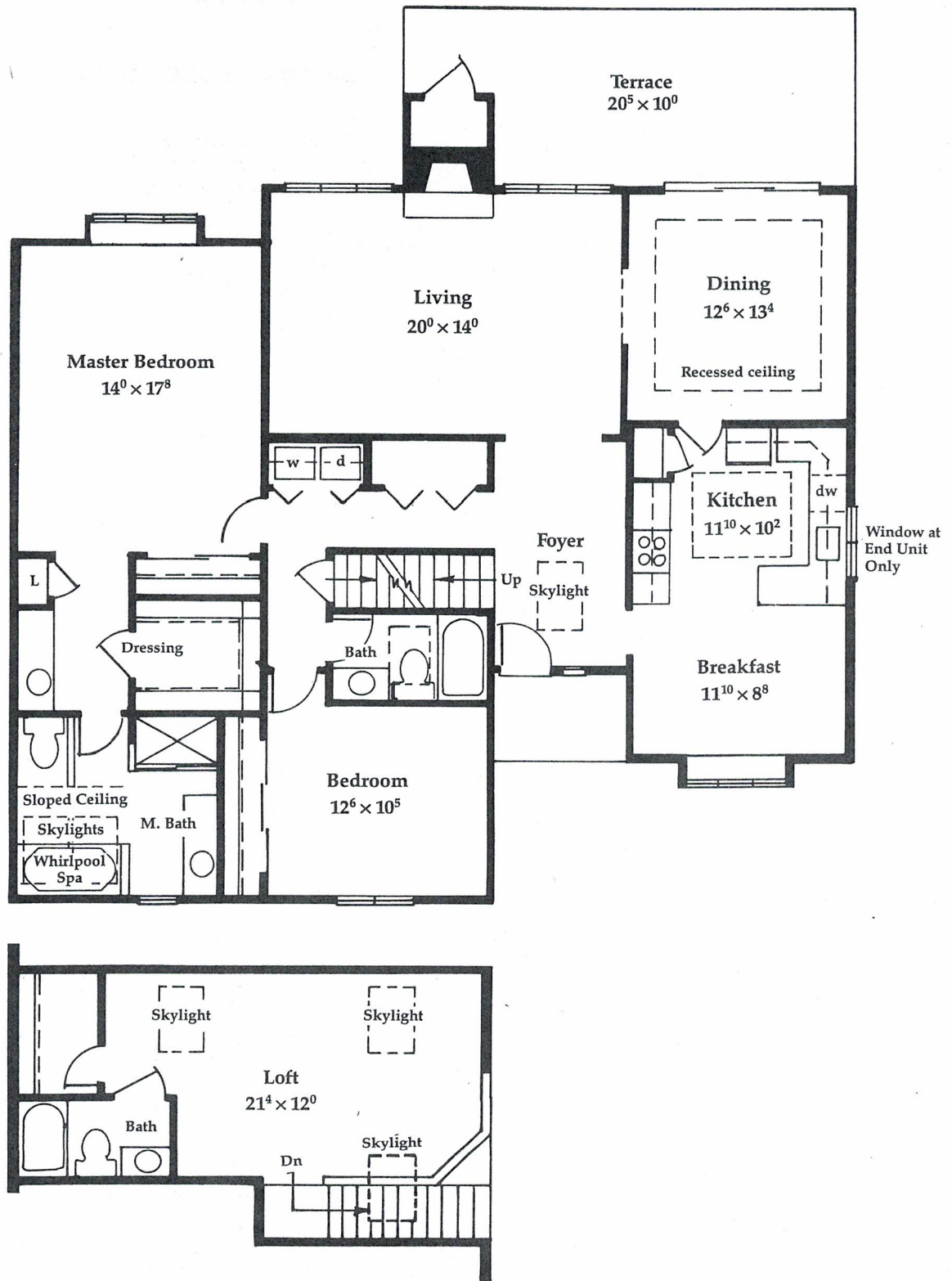
## MARLBOROUGH

2170 Sq. Ft. ■ 3 Bedrooms ■ 2 Baths



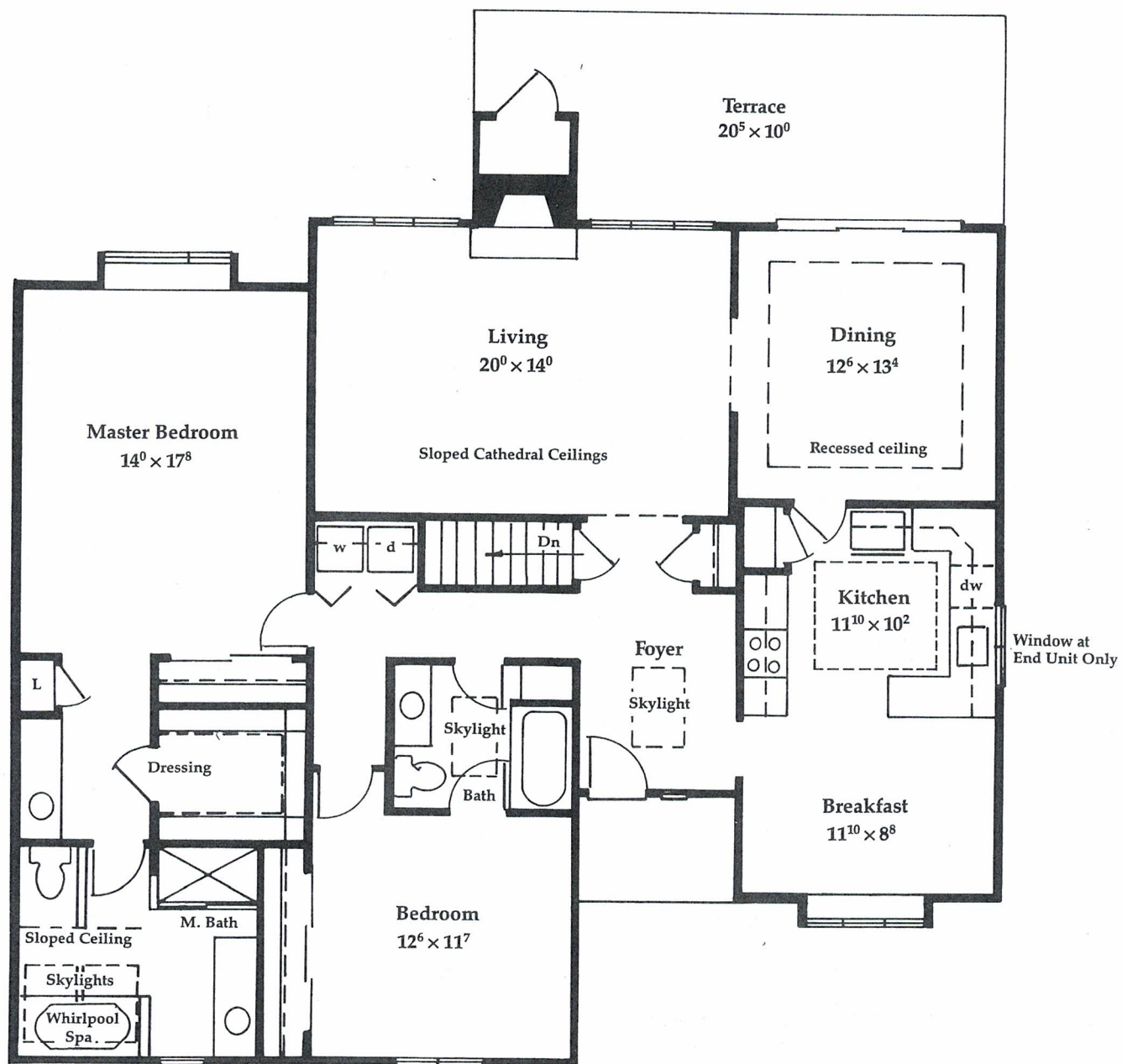
## BRADFORD

1750 Sq. Ft. ■ 3 Bedrooms ■ 2 Baths



## NEWTOWN

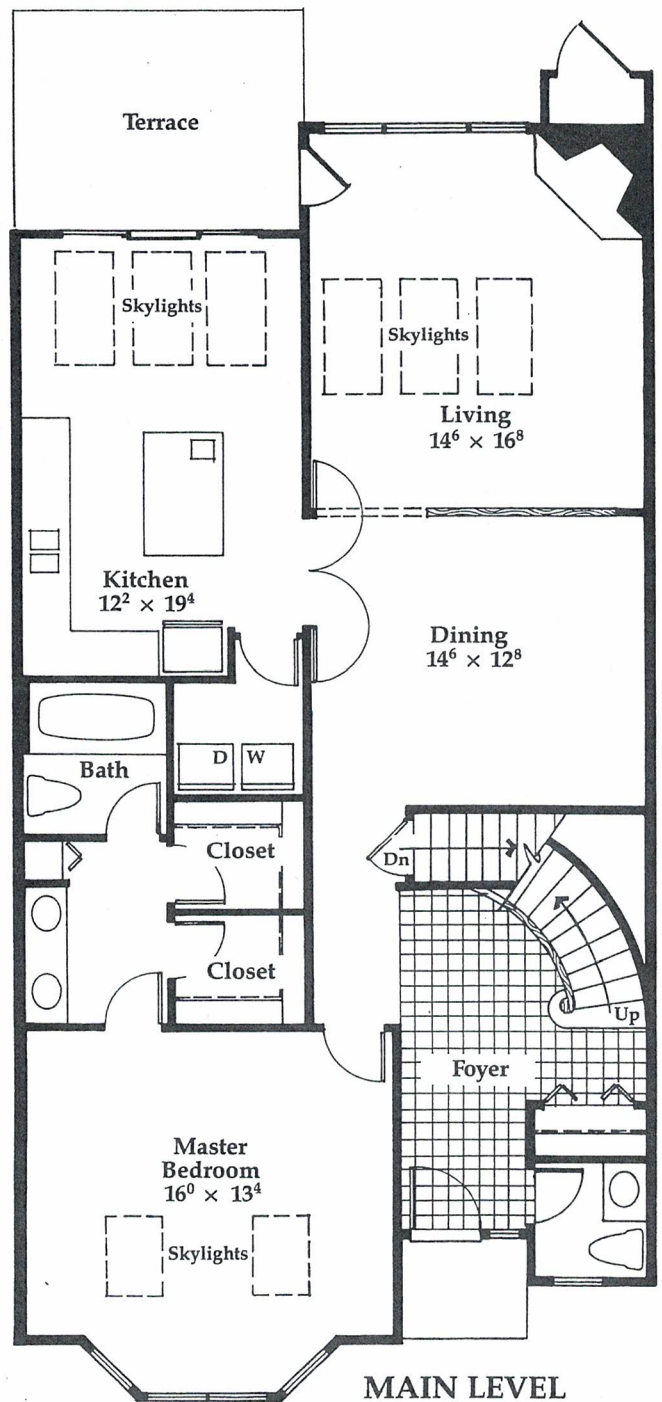
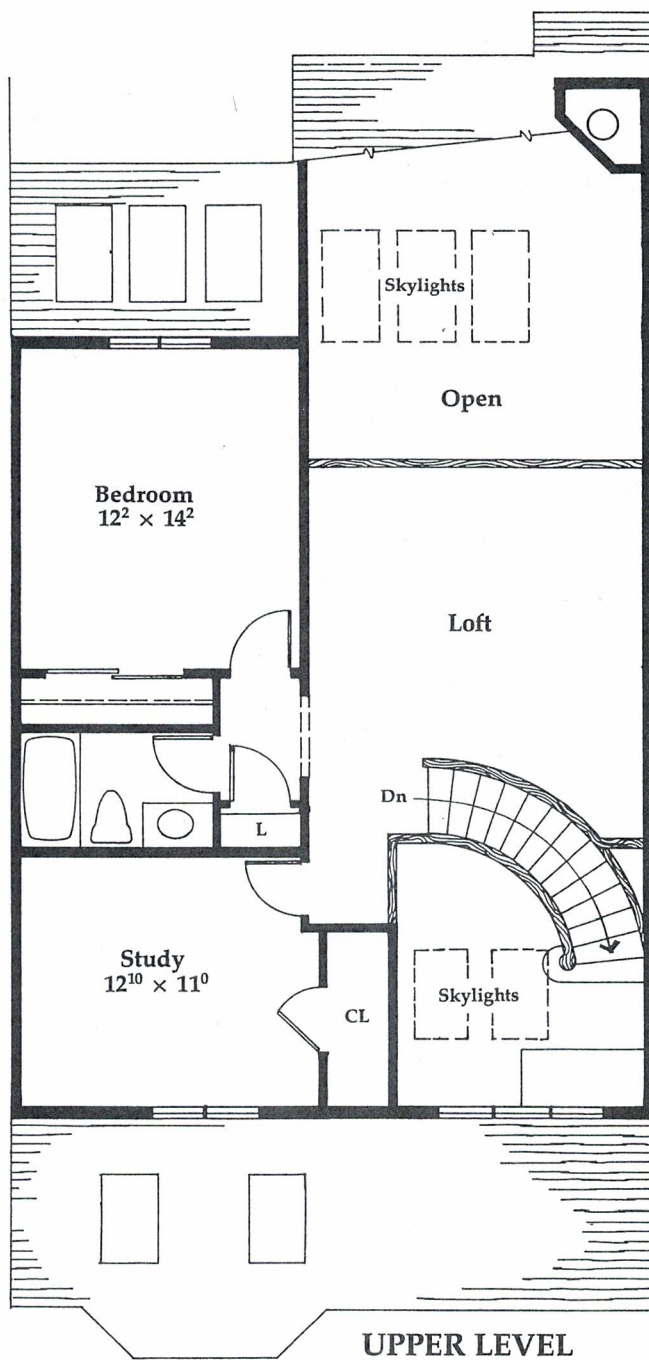
2105 Sq. Ft. ■ 2 Bedrooms ■ 3 Baths ■ Loft



## THORNBURY

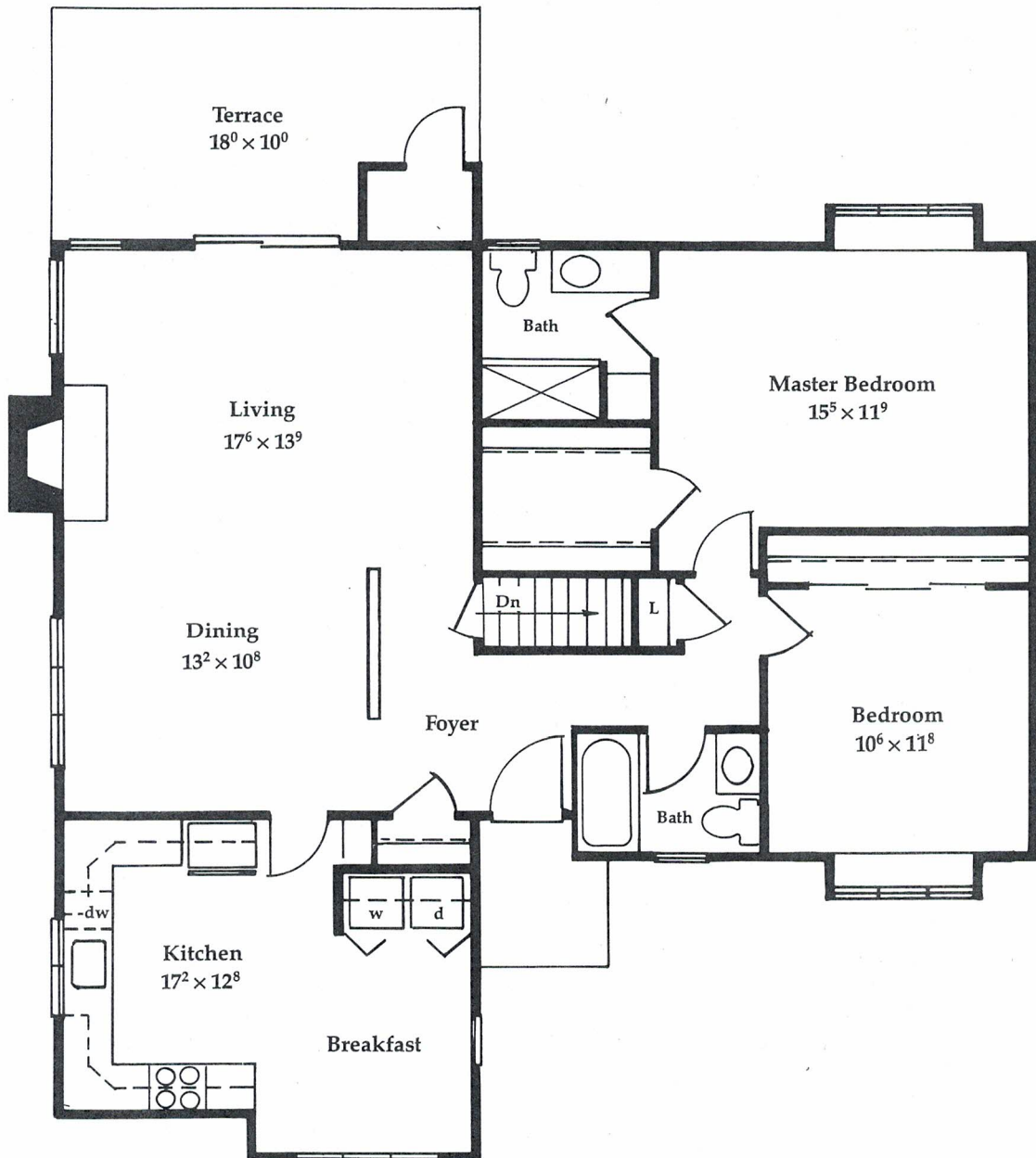
1765 Sq. Ft. ■ 2 Bedrooms ■ 2 Baths





## SPRINGTON

2180 Sq. Ft. ■ 2 Bedrooms ■ 2 Baths ■ Study ■ Loft



**DONEGAL**

*1335 Sq. Ft. ■ 2 Bedrooms ■ 2 Baths*