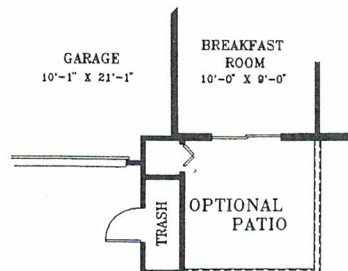
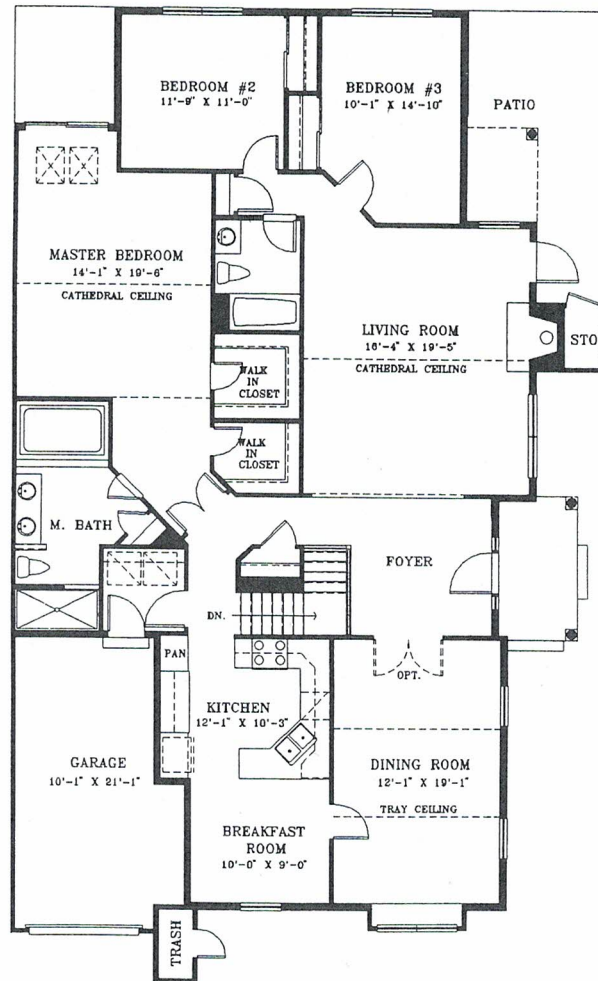


# Buckingham I Model

## FIRST FLOOR

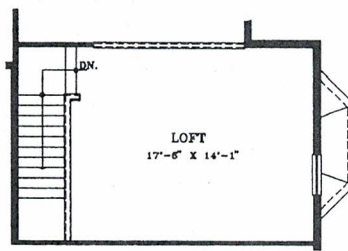


- 2046 Sq. Ft. Living Area
- 2046 Sq. Ft. Basement Area
- 3 Bedrooms
- 2 Baths
- Attached Garage
- End of Building Location, Side Entry

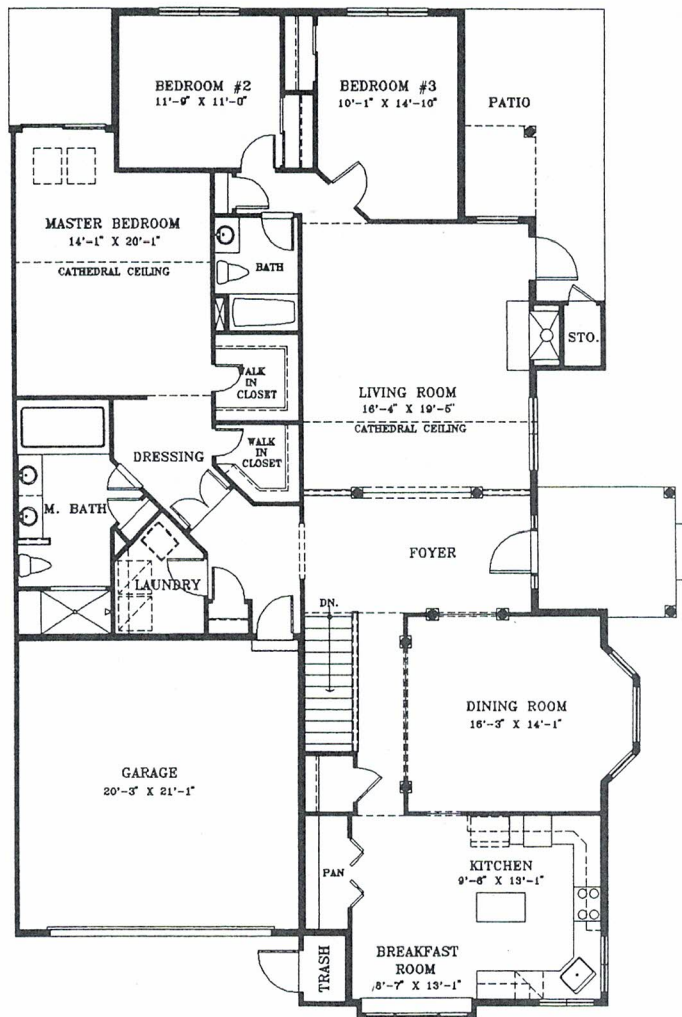
Floor Plans are for illustrative purposes only, are not to scale and are subject to change.



# Buckingham II Model



OPTIONAL LOFT



FIRST FLOOR

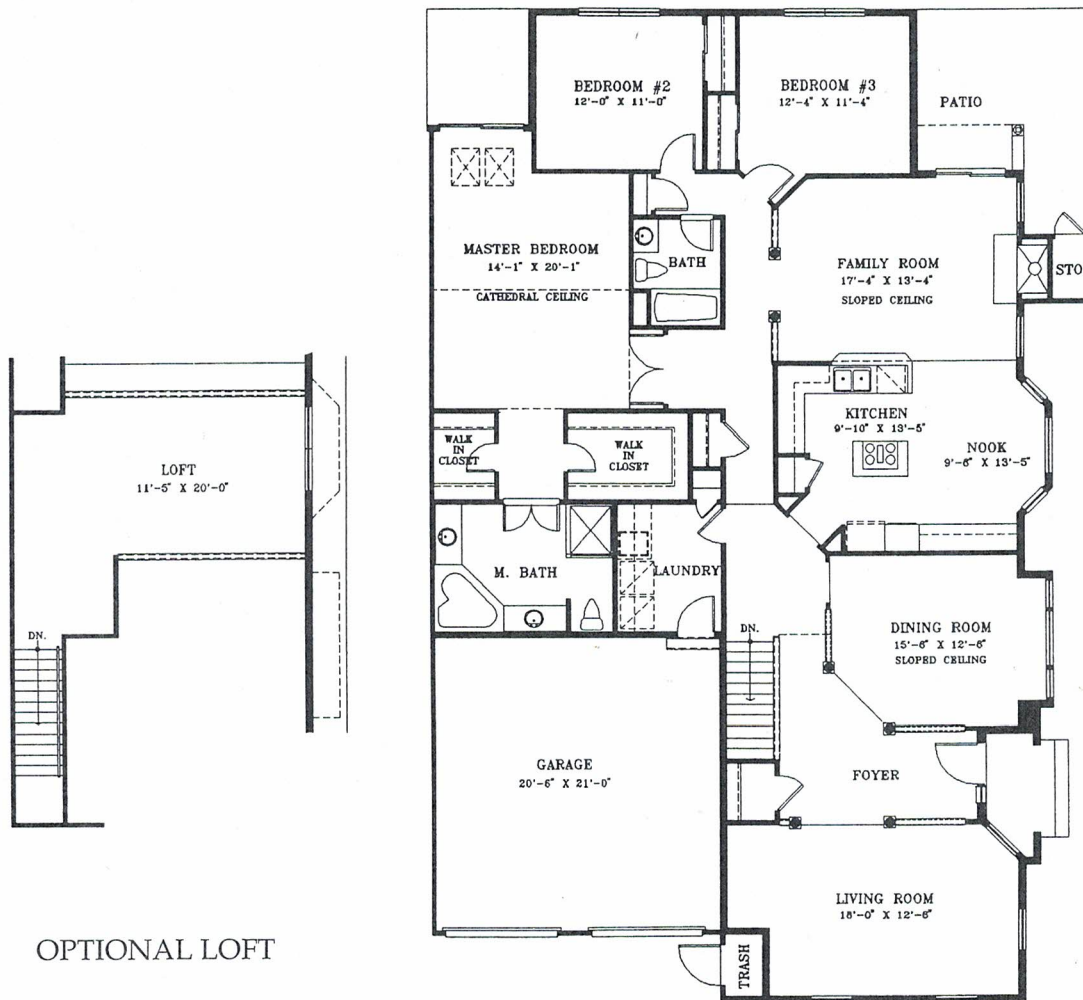
- 2187 Sq. Ft. Living Area  
(2448 Sq. Ft. With Optional Loft)
- 2187 Sq. Ft. Basement Area
- 3 Bedrooms
- 2 Baths
- 2 Car Attached Garage
- End of Building Location, Side Entry



Floor Plans are for illustrative purposes only, are not to scale and are subject to change.

# Buckingham III Model

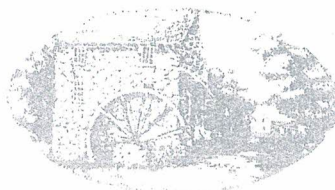
13



FIRST FLOOR

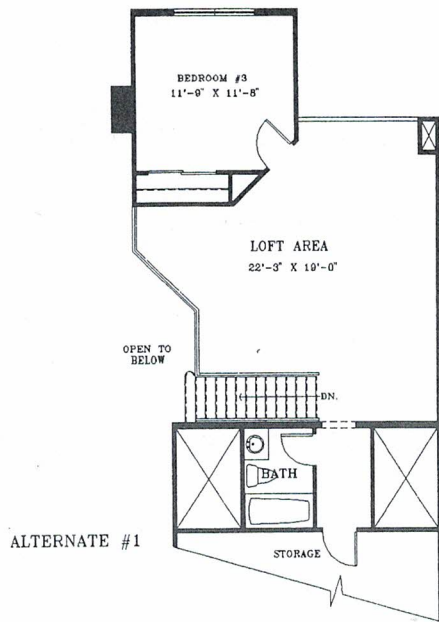
- 2355 Sq. Ft. Living Area  
(2645 Sq. Ft. With Optional Loft)
- 2355 Sq. Ft. Basement Area
- 3 Bedrooms
- 2 Baths
- 2 Car Attached Garage
- End of Building Location, Side Entry

Floor Plans are for illustrative purposes only, are not to scale and are subject to change.

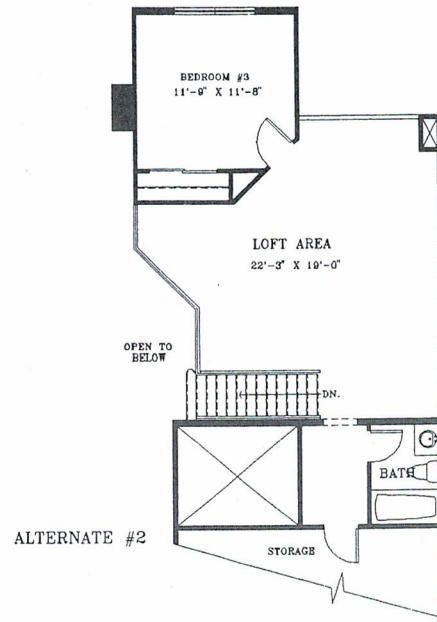


# Coventry Model

16

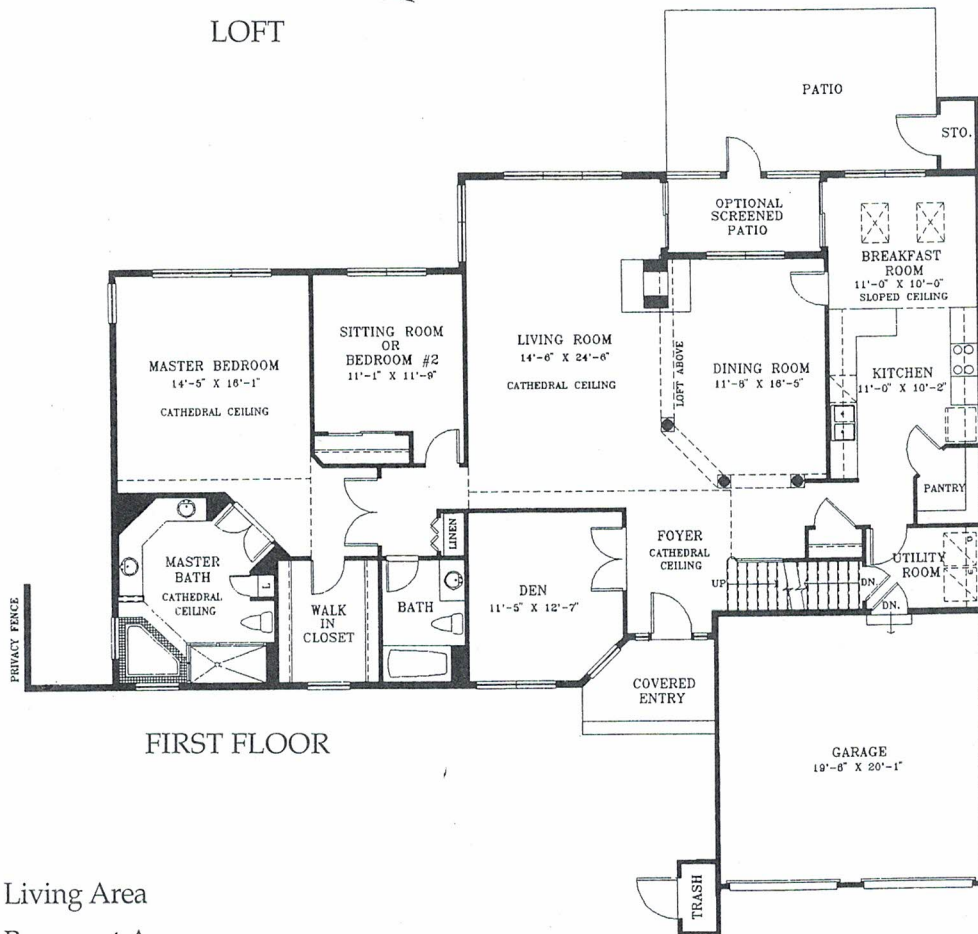


ALTERNATE #1



ALTERNATE #2

## LOFT



## FIRST FLOOR

- 2710 Sq. Ft. Living Area
- 2105 Sq. Ft. Basement Area
- 3 or 4 Bedrooms & Den/Loft
- 3 Baths
- 2 Car Attached Garage
- End of Building Location

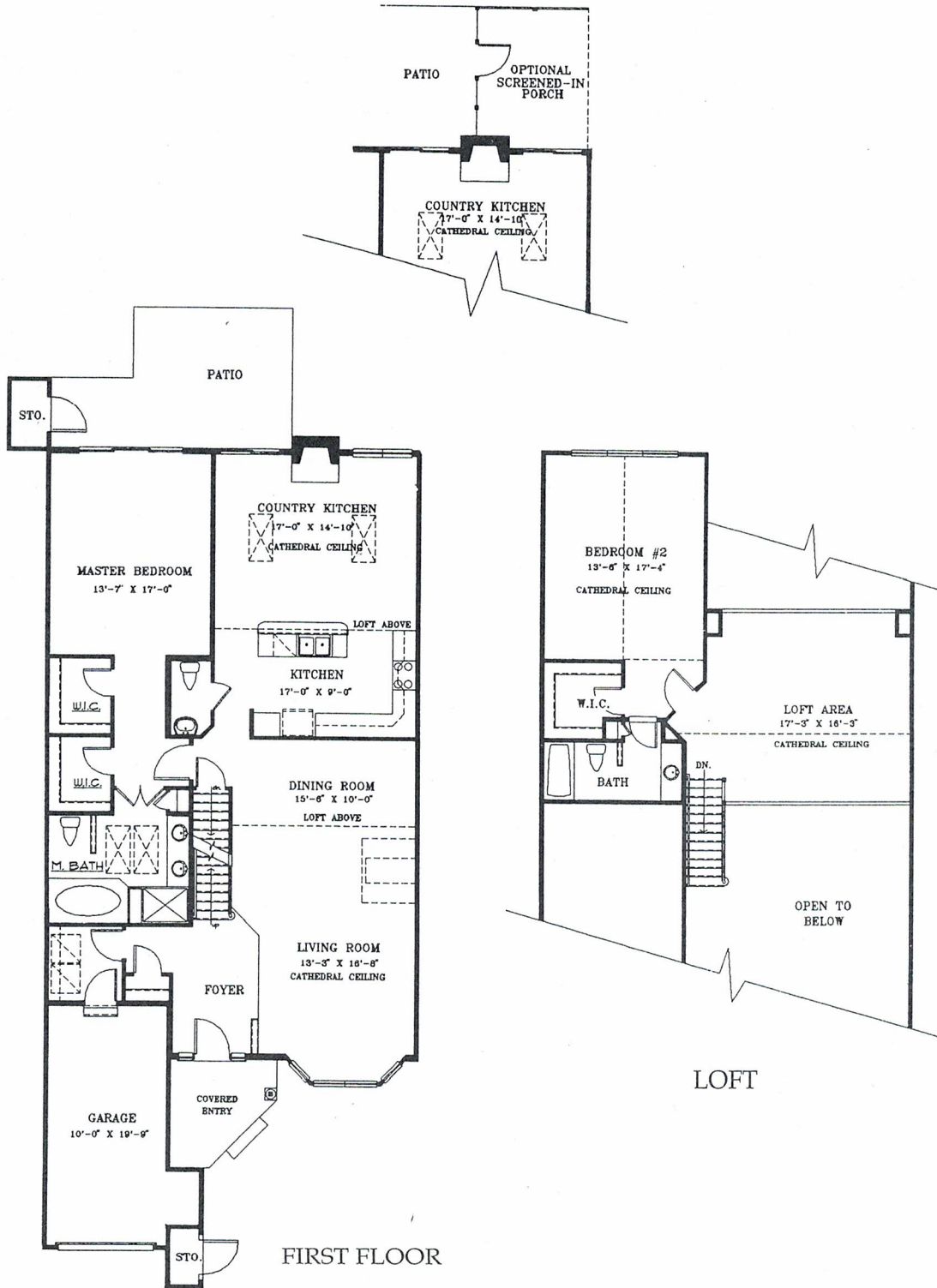


Floor Plans are for illustrative purposes only, are not to scale and are subject to change.



# Montgomery Model

14



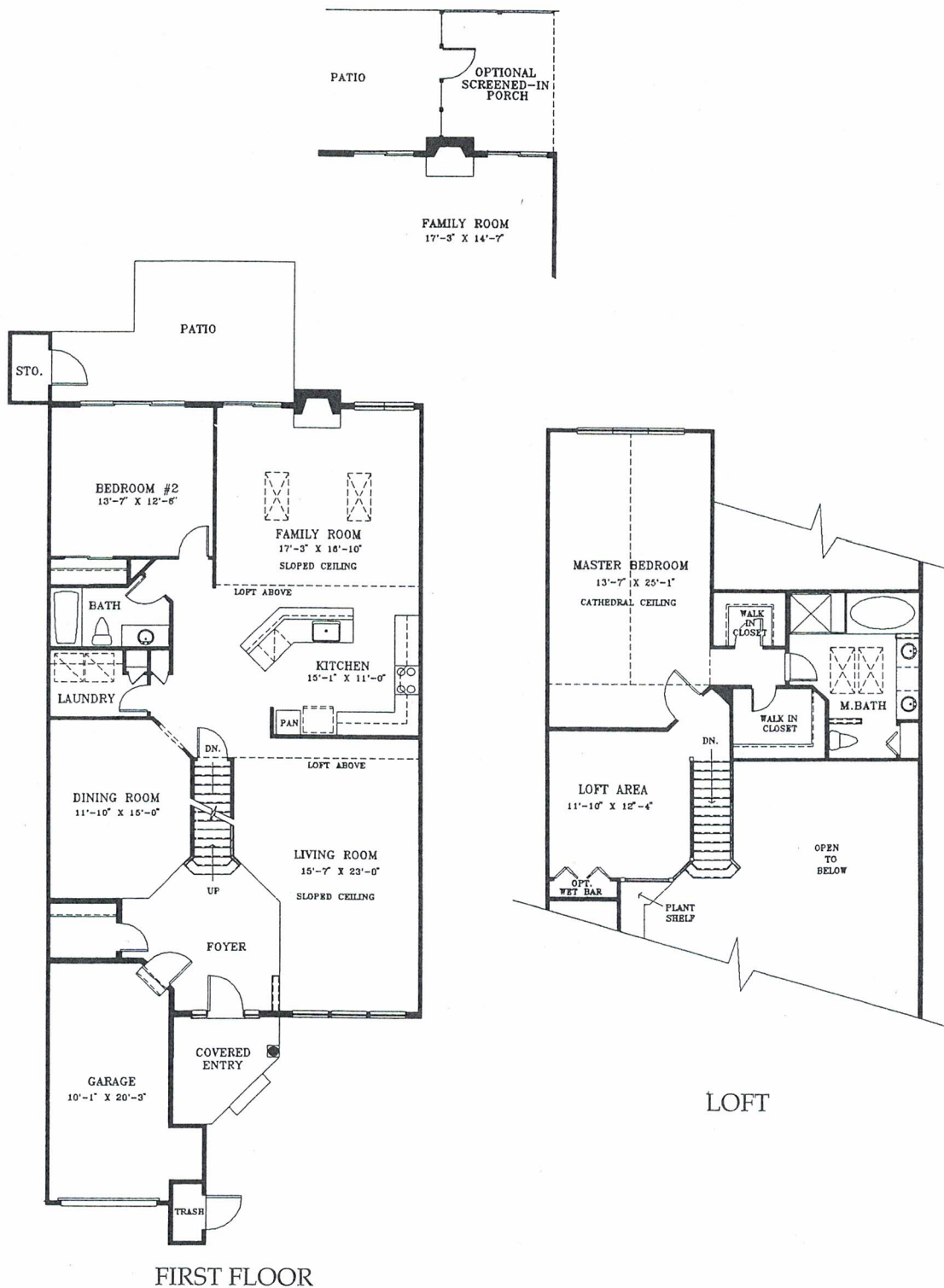
- 2296 Sq. Ft. Living Area
- 1616 Sq. Ft. Basement Area
- 2 Bedrooms & Den/Loft
- 2 1/2 Baths
- Attached Garage



Floor Plans are for illustrative purposes only, are not to scale and are subject to change.

# Highland Model

15



- 2296 Sq. Ft. Living Area
- 1616 Sq. Ft. Basement Area
- 2 Bedrooms & Den/Loft
- 2 Baths
- Attached Garage

Floor Plans are for illustrative purposes only, are not to scale and are subject to change.



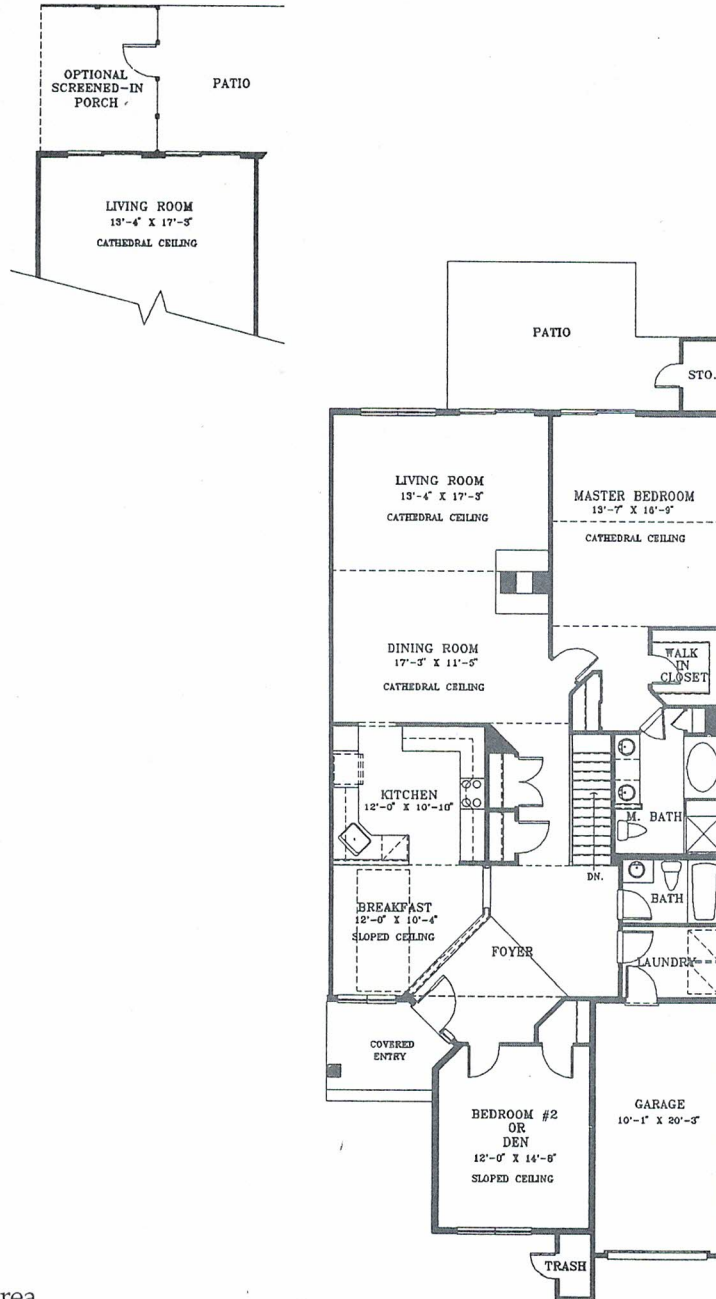
Wooldridge Construction offers a series of seven beautifully appointed attached floorplans from which to choose — the Glenmoore, the Montgomery, the Highland, the three Buckingham and the Coventry. Each has its own character, its own charm, and its own appealing qualities.

Every home at Hershey's Mill is built with an eye

for style, comfort, pleasure and relaxation.

You'll enjoy superior craftsmanship, energy efficiency and a number of security and safety features designed to fit your specific needs. And, perhaps best of all, every home comes with a prestigious Hershey's Mill address that lets you live an enviable country club lifestyle every day.

## *Glenmoore Model*



- 1750 Sq. Ft. Living Area
- 1750 Sq. Ft. Basement Area
- 2 Bedrooms
- 2 Baths
- Attached Garage



Floor Plans are for illustrative purposes only, are not to scale and are subject to change.