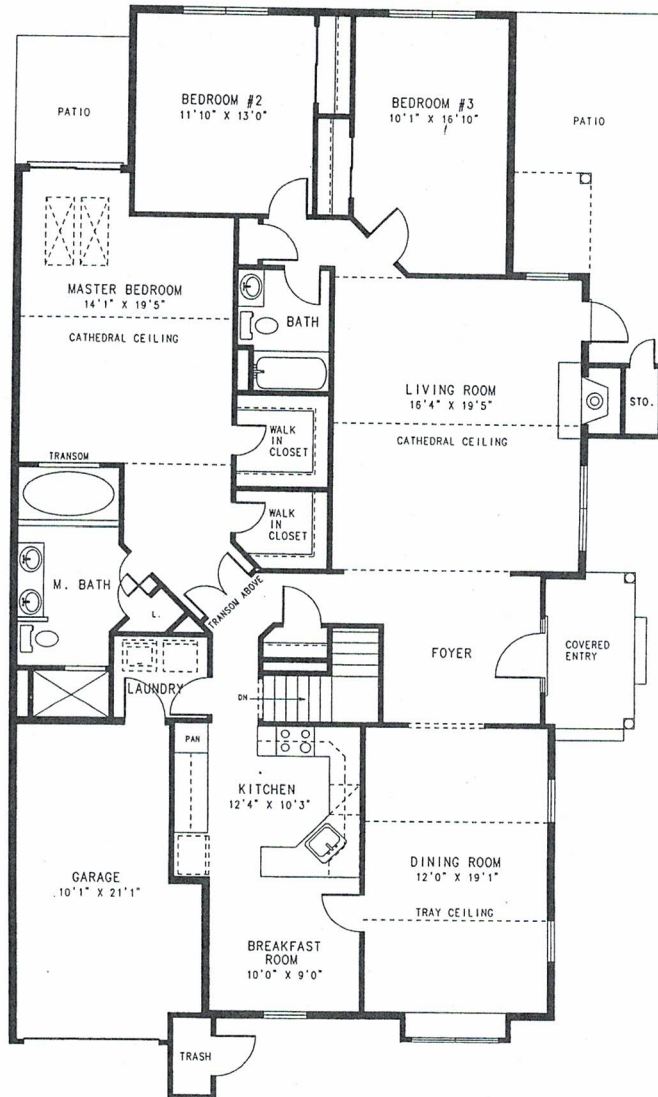


# Buckingham I Model



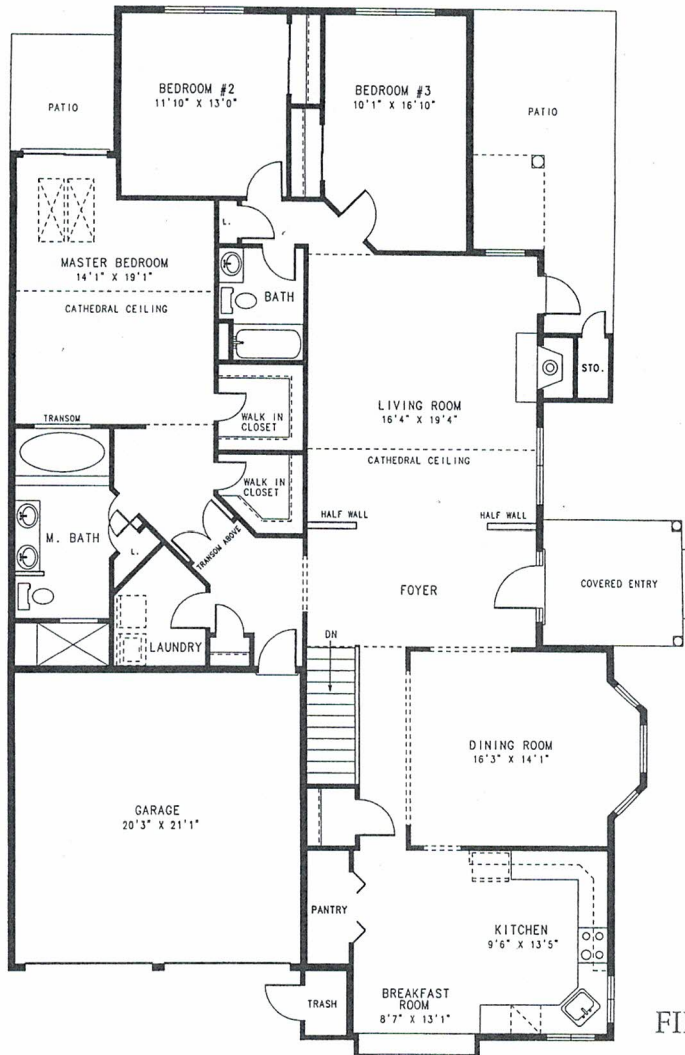
FIRST FLOOR PLAN

- 2102 Sq. Ft. Living Area
- 2102 Basement Area
- 3 Bedrooms
- 2 Baths
- Attached Garage
- End of Building Location, Side Entry

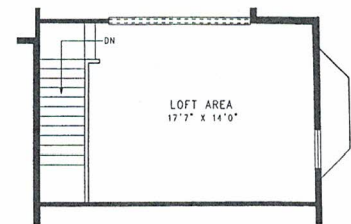
*Floor Plans are for illustrative purposes only,  
are not to scale and are subject to change.*



# Buckingham II Model



FIRST FLOOR PLAN



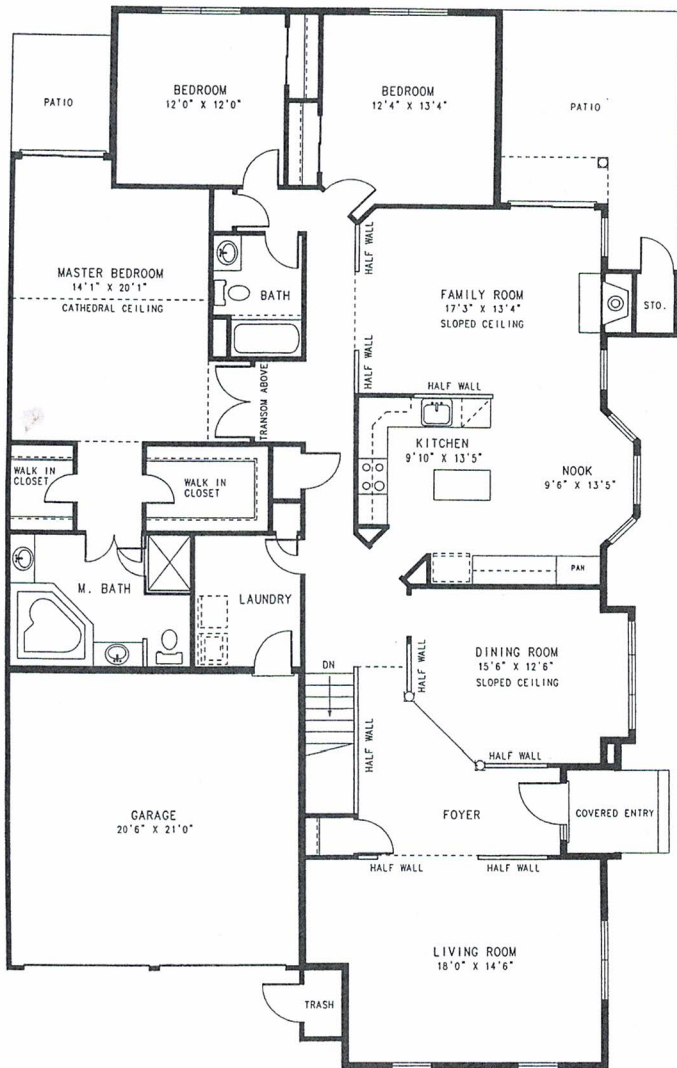
SECOND FLOOR PLAN (OPTIONAL)

- 2243 Sq. Ft. Living Area  
2504 Sq. Ft. With Optional Loft
- 2243 Basement Area
- 3 Bedrooms
- 2 Baths
- 2 Car Attached Garage
- End of Building Location, Side Entry

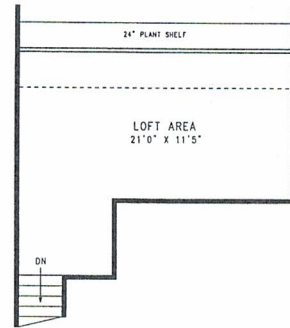
*Floor Plans are for illustrative purposes only,  
are not to scale and are subject to change.*



# Buckingham III Model



FIRST FLOOR PLAN



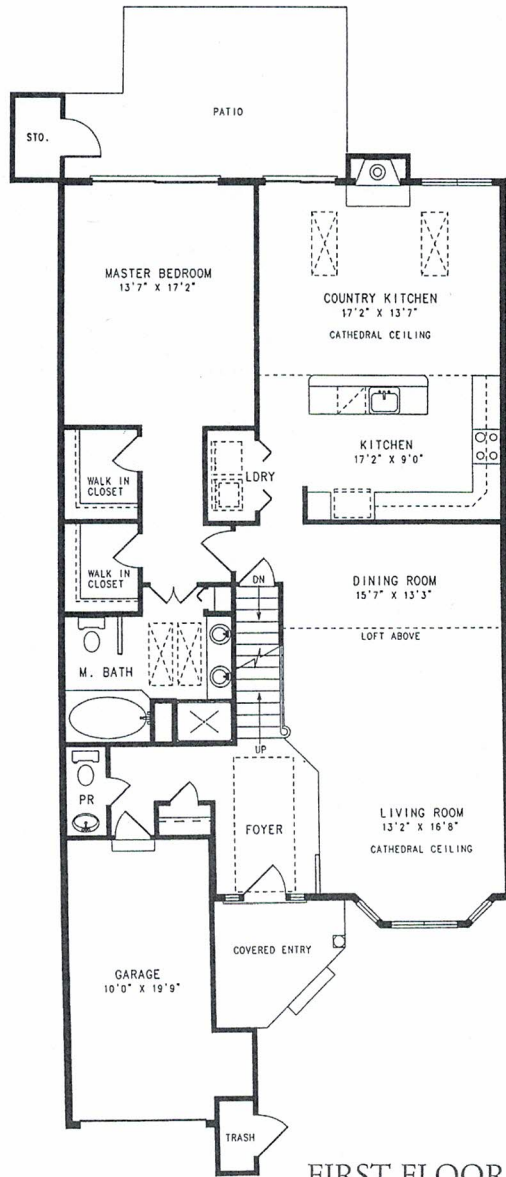
SECOND FLOOR PLAN (OPTIONAL)

- 2411 Sq. Ft. Living Area  
2701 Sq. Ft. With Optional Loft
- 2411 Basement Area
- 3 Bedrooms
- 2 Baths
- 2 Car Attached Garage
- End of Building Location, Side Entry

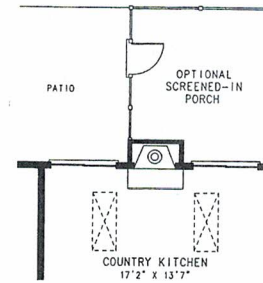
Floor Plans are for illustrative purposes only,  
are not to scale and are subject to change.



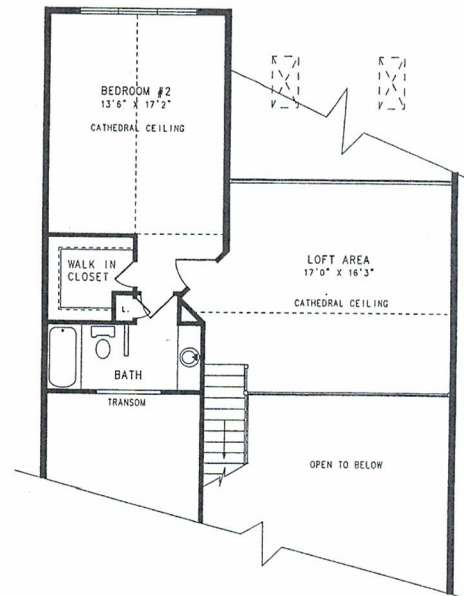
# Montgomery Model



FIRST FLOOR PLAN



OPTIONAL SCREENED PORCH



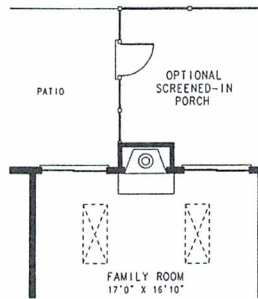
SECOND FLOOR PLAN

- 2296 Sq. Ft. Living Area
- 1616 Basement Area
- 2 Bedrooms & Den/Loft
- 2 1/2 Baths
- Attached Garage

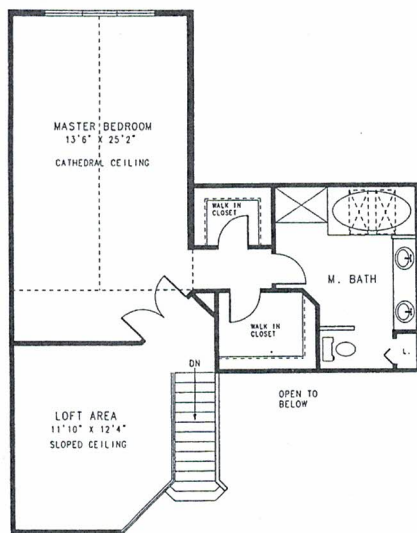
*Floor Plans are for illustrative purposes only,  
are not to scale and are subject to change.*



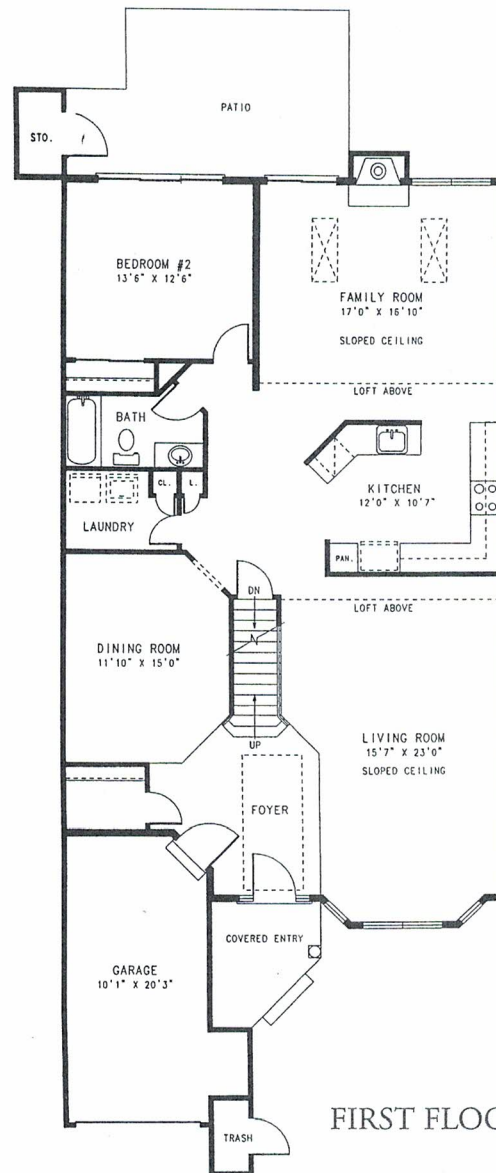
# Highland Model



OPTIONAL SCREENED PORCH



SECOND FLOOR PLAN



FIRST FLOOR PLAN

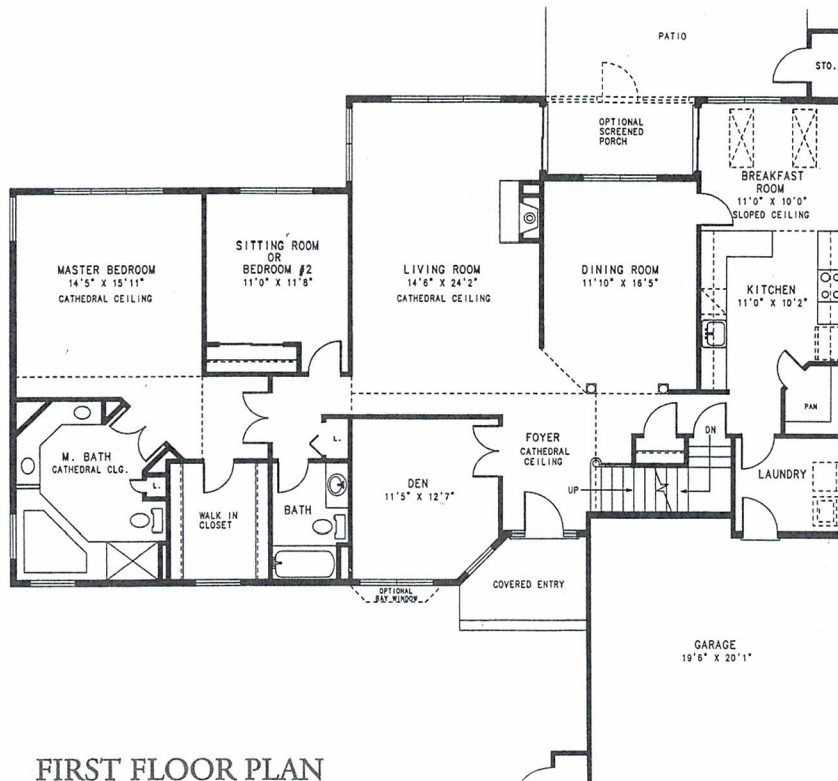
- 2296 Sq. Ft. Living Area
- 1616 Basement Area
- 2 Bedrooms & Den/Loft
- 2 Baths
- Attached Garage

*Floor Plans are for illustrative purposes only,  
are not to scale and are subject to change.*



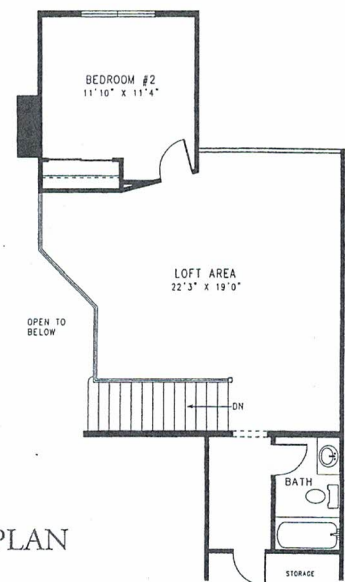


# Coventry Model



FIRST FLOOR PLAN

- 2710 Sq. Ft. Living Area
- 2105 Basement Area
- 3 Bedrooms, Den & Loft
- 3 Baths
- 2 Car Attached Garage
- End of Building Location



SECOND FLOOR PLAN

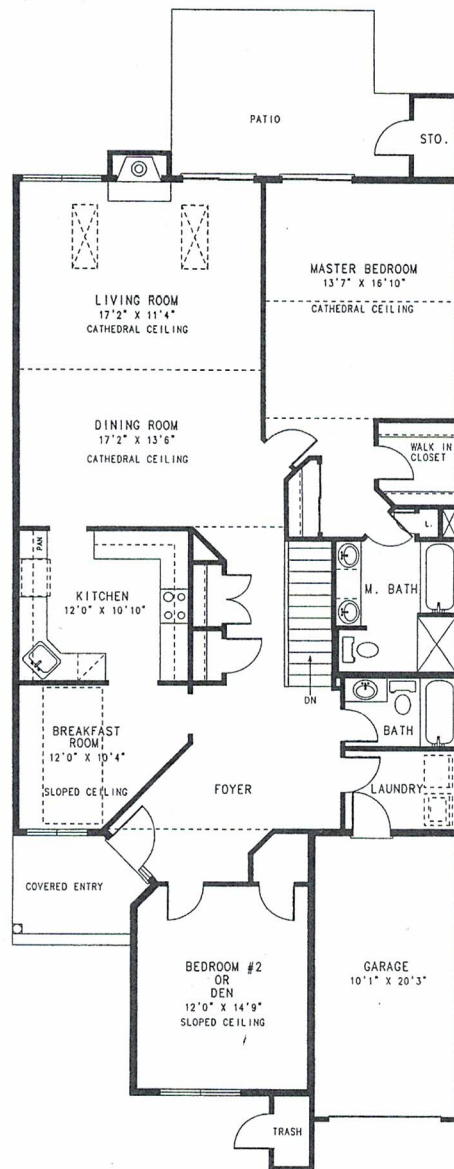
*Floor Plans are for illustrative purposes only,  
are not to scale and are subject to change.*



Wooldridge Construction offers a series of seven beautifully appointed attached floorplans from which to choose - the Glenmoore, the Montgomery, the Highland, the three Buckingham's and the Coventry. Each has its own character, its own charm, and its own appealing qualities.

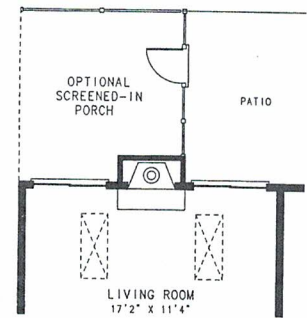
Every home at Hershey's Mill is built with an eye for style, comfort, pleasure and relaxation. You'll enjoy superior craftsmanship, energy efficiency and a number of security and safety features designed to fit your specific needs. And, perhaps best of all, every home comes with a prestigious Hershey's Mill address that lets you live an enviable country club lifestyle every day.

## Glenmoore Model



FIRST FLOOR PLAN

- 1750 Sq. Ft. Living Area
- 1750 Basement Area
- 2 Bedrooms
- 2 Baths
- Attached Garage



OPTIONAL SCREENED PORCH

*Floor Plans are for illustrative purposes only,  
are not to scale and are subject to change.*

