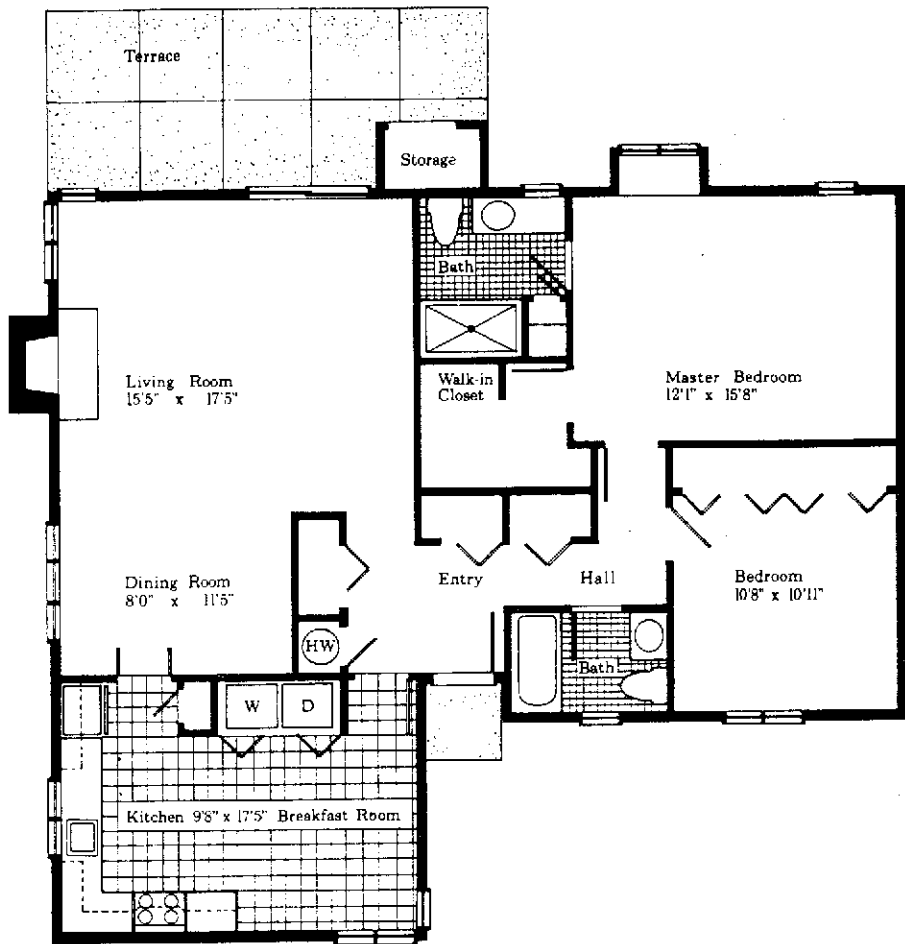


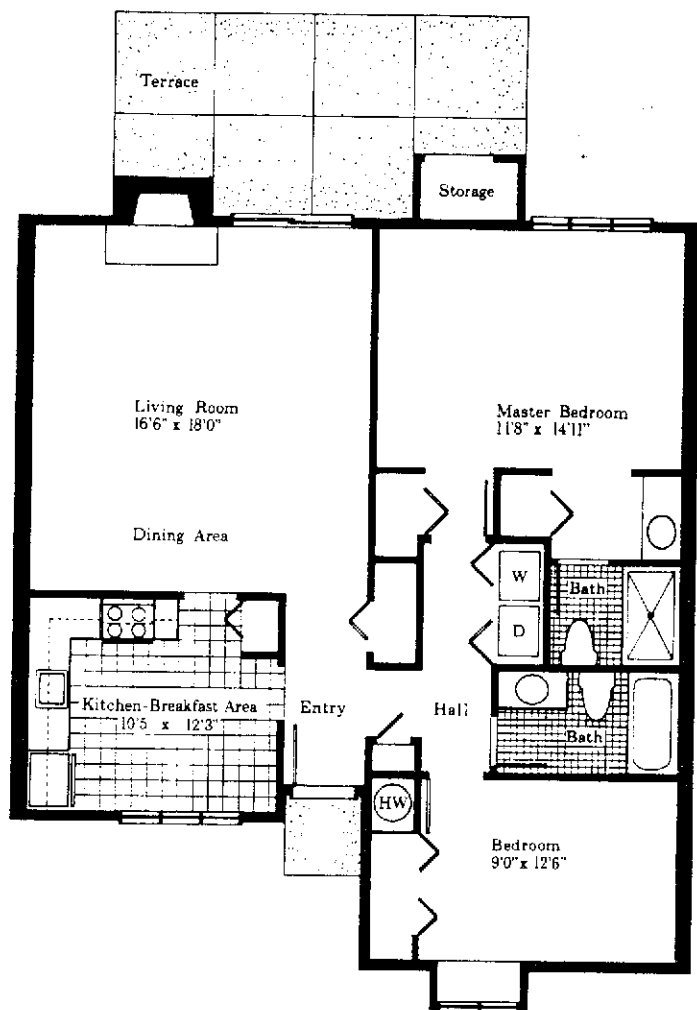
Bradford

This listing is subject to errors, omissions, price changes, withdrawal or prior sale without notification in advance to any party.



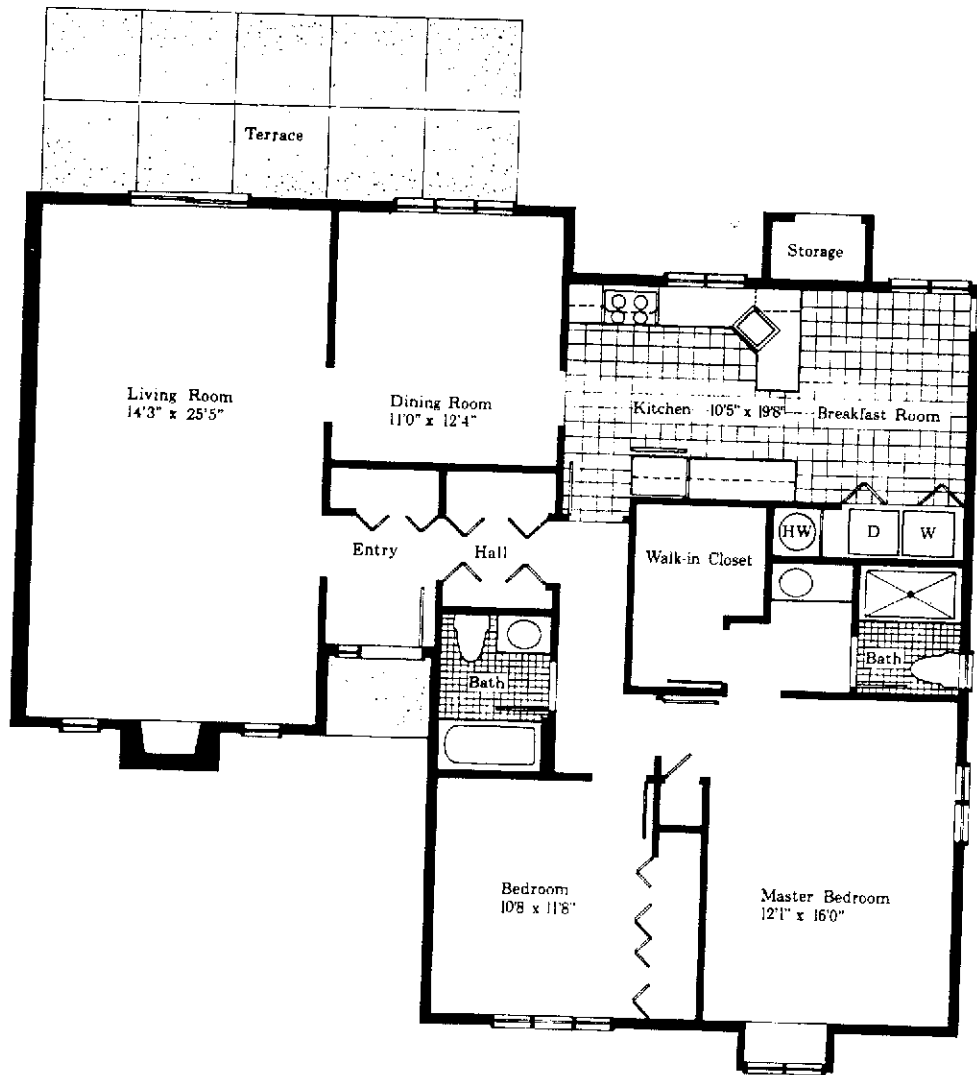
- Master bedroom with window seat and walk-in closet
- Second bedroom
- Two full bathrooms
- Living room corner window
- Cheerful breakfast area

DONEGAL



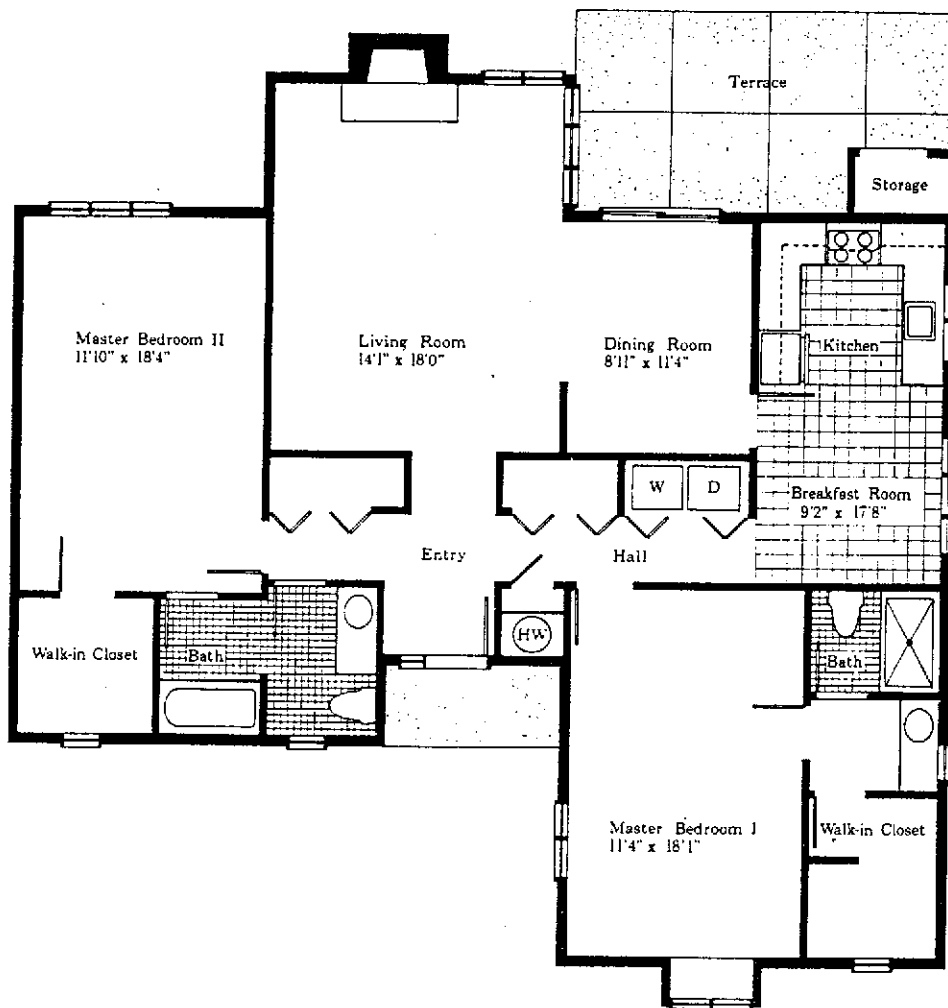
- Small, comfortable one bedroom and den (or second bedroom) with window seat
- Two full bathrooms
- Pantry closet in kitchen

EASTTOWN



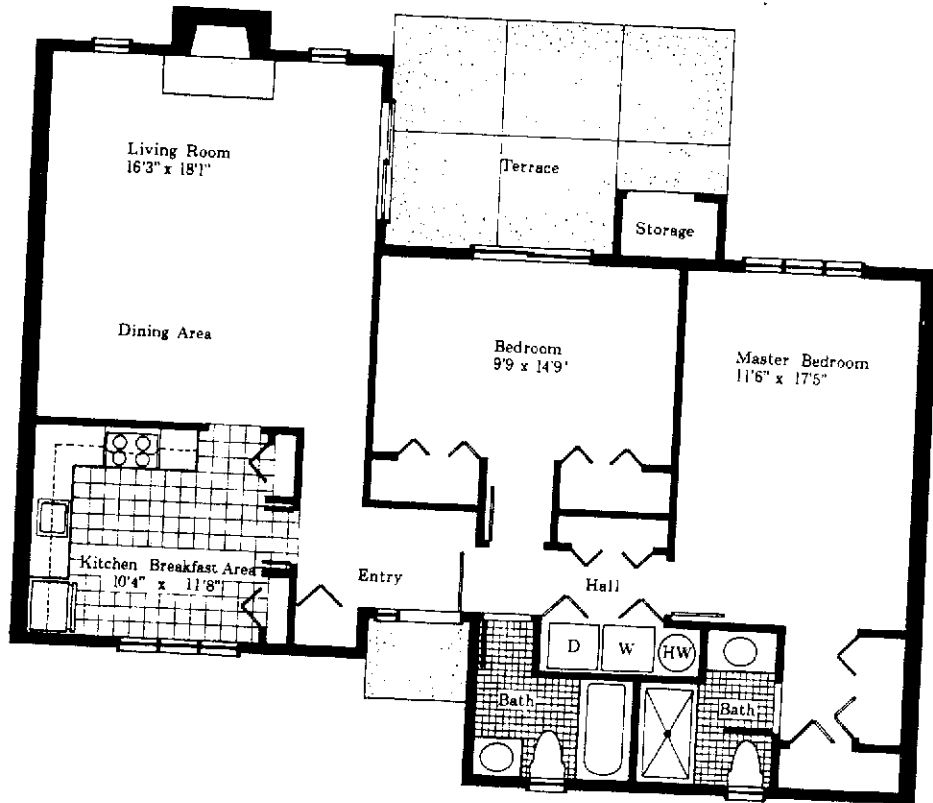
- Master bedroom with window seat and dressing area
- Walk-in closet
- Second bedroom
- Two full bathrooms
- Oversize living room
- Formal dining room with sky-lighted cathedral ceiling
- Large kitchen with breakfast room

FALLOWFIELD



- Two master bedroom suites, one with window seat
- Both bedrooms have walk-in closets
- Two full bathrooms
- Living room with cathedral ceiling
- Separate dining room

GOSHEN



- Oversize master bedroom
- Second bedroom
- Two full bathrooms
- Two pantry closets
- Patio accessible from living room and second bedroom

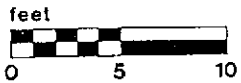
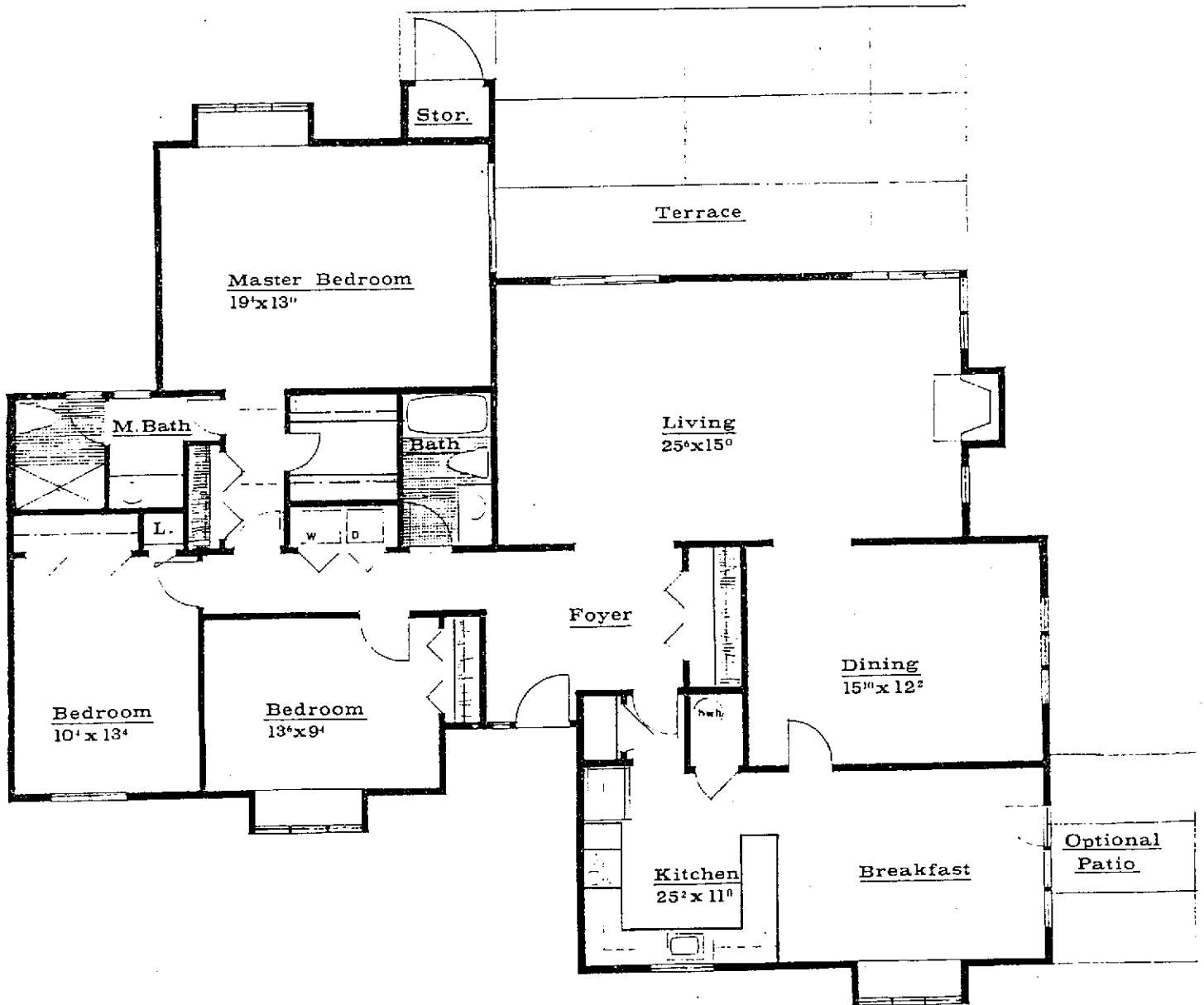
LONDONGROVE

Marlborough

3 bedroom - 2 bath
1894 square feet

scale: 7/64" = 1"

All room sizes are approximate



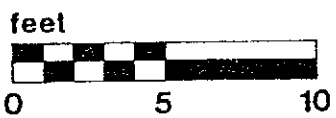
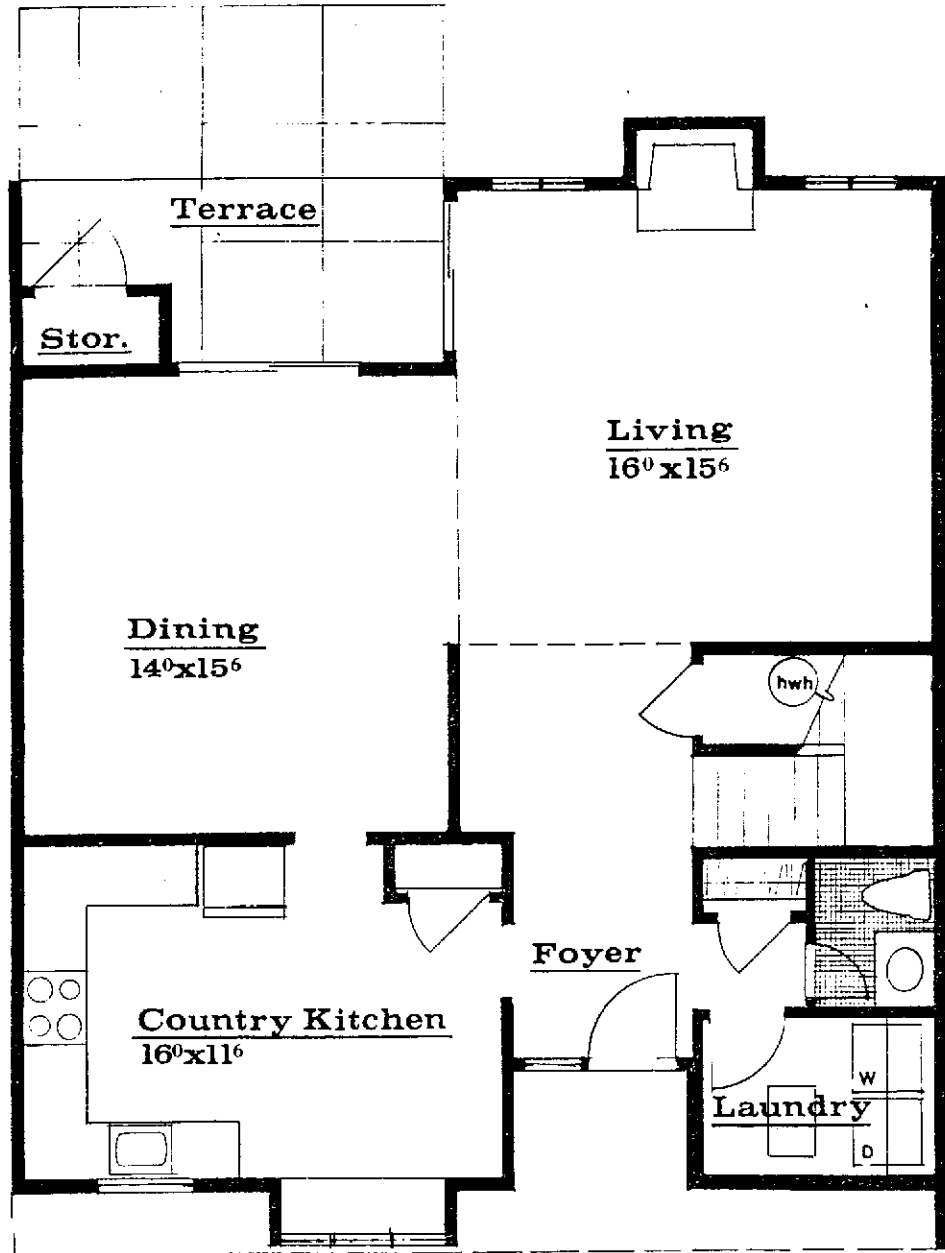
Oxford

2 bedroom - 2-1/2 bath
2020 square feet

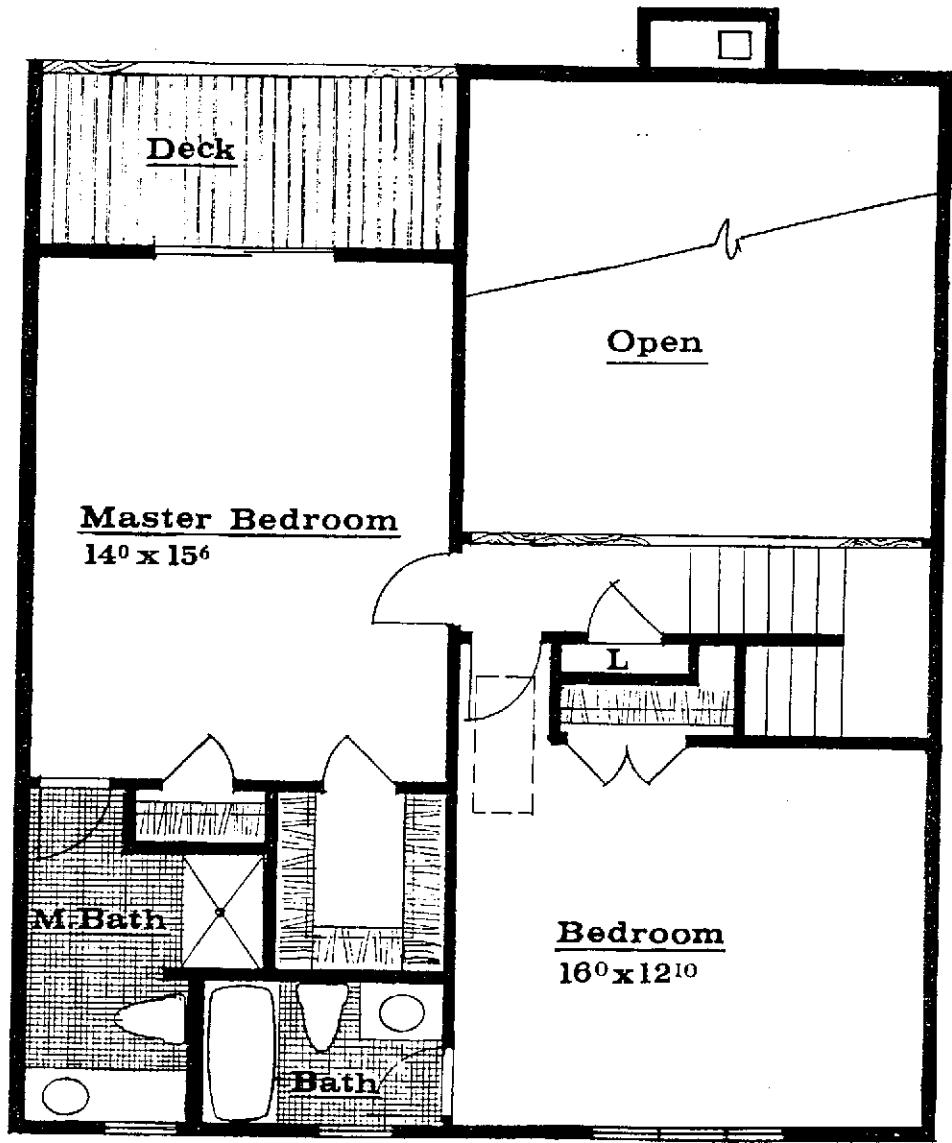
scale: 3/16" = 1'

All room sizes are approximate

1st level



2nd level



PENNSBURY

1ST FLOOR

2 BEDROOMS & 2 BATHROOMS

1272 SQUARE FEET

All room sizes are approximate

